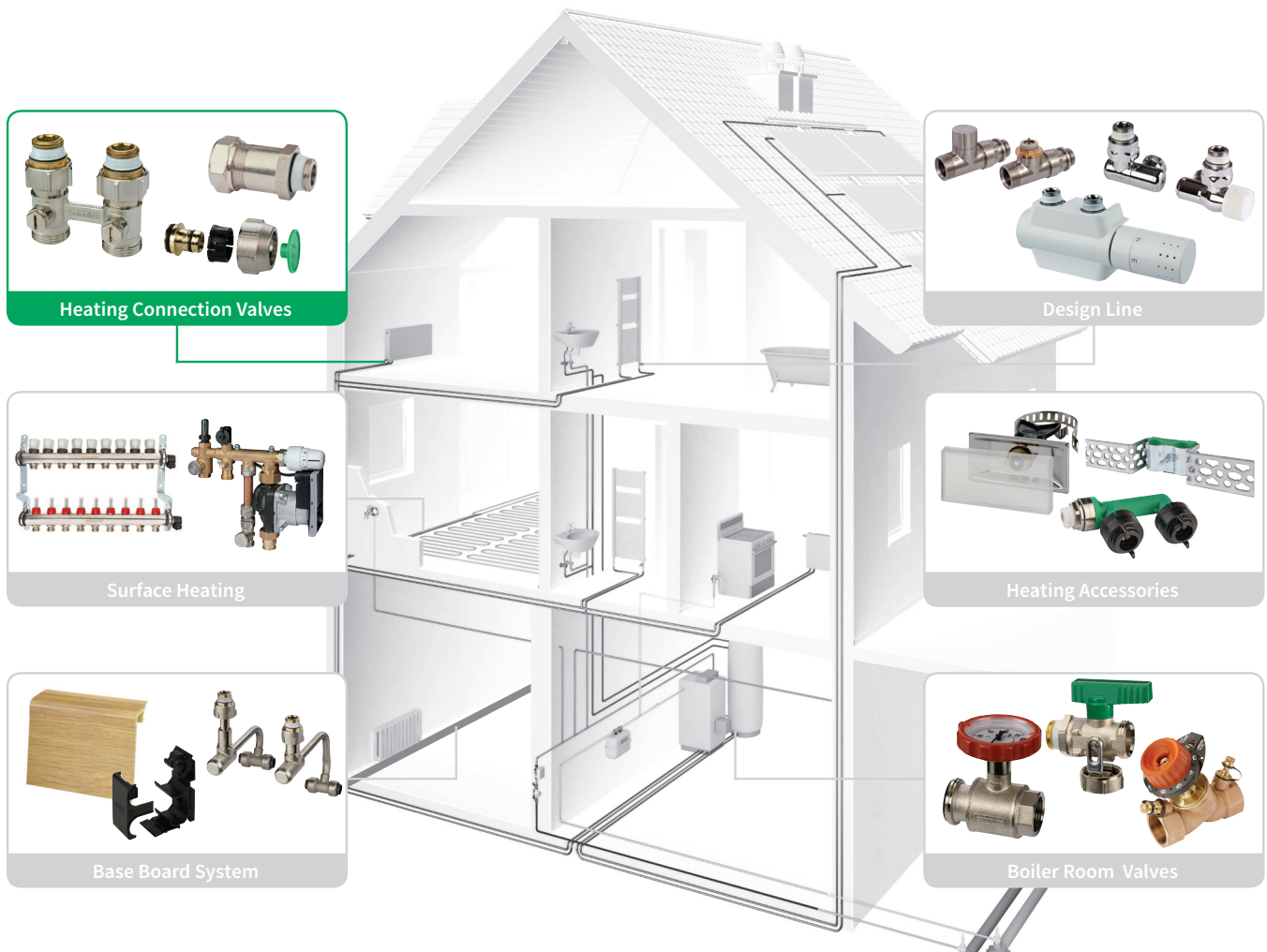




Compression Adapters and VSH SUPER Compression Fittings

- Complete range for all dimensions and types of pipe
- Fast and easy installation
- Reusable

Simplex Products at a Glance



Complete Product Range – reliable Connections

Simplex compression adapters guarantee a secure connection. The complete range includes screw connections for all popular types and dimensions of pipe. The ideal sealing pipe connection can be reused many times, if necessary. VSH SUPER brass compression fittings can be used for different types of pipe and the optimum supplement to other systems.

The Compression Adapter and Compression Fitting Range includes the following:

- ◆ Compression adapters for metallic pipes
- ◆ Compression adapters for plastic and multilayer composite pipes
- ◆ VSH SUPER compression fittings, metallic sealed

| Simplex Compression Adapters



Product Benefits at a Glance:

- ◆ Reliability which has proved itself millions of times over
- ◆ Sophisticated 2-stage technology (depending on the version)
- ◆ No torque specifications through stop technology
- ◆ Gentle pipe connection without deformation of the connecting pipe
- ◆ Detachable connection
- ◆ Permanent seal thanks to high-class raw materials for sealing elements

A11 Compression Adapter for metallic Pipes

Benefits:

- ◆ High pulling forces specifically with hard pipe surfaces
- ◆ No torque specifications
- ◆ Gentle pipe connection without deformation of the connecting pipe
- ◆ Detachable connection
- ◆ Permanent seal thanks to uniquely developed raw material formula for sealing element

Applications

Heating systems

Max. pressure: 10 bar

Max. temp.: 110 °C permanent temperature

130 °C short-term

Suitable Pipes for A11, F11 and A1

Pipe		A11, F11	A1
Copper pipes according to DIN EN 1057 (soft, semi-hard, hard)	blank	◆	◆
	nickel-plated	◆	-
	chrome-plated	◆*	-
Carbon steel pipe acc. to DIN EN 10305	blank	◆	◆
	galvanised	◆	◆
Stainless steel pipe acc. to DIN EN 10312		◆	-

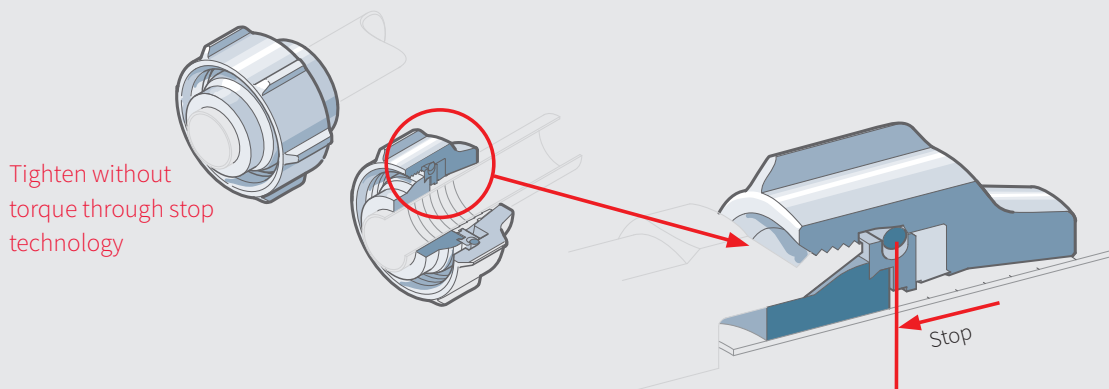
* Limitations with chrome-plated copper pipes:
14-18 mm dimension only for semi-hard and hard copper pipes

A11 and F11 Compression Adapters – Innovative 2-stage Technology

2-stage Technology

Seal – clamp – you're done! It's easy with flexible sealing

Simplex compression adapters!



Stage 1 - Seal

In the 1st step, the flexible sealing element is compressed. The connection is already 100 % tight.

Stage 2 - Clamp

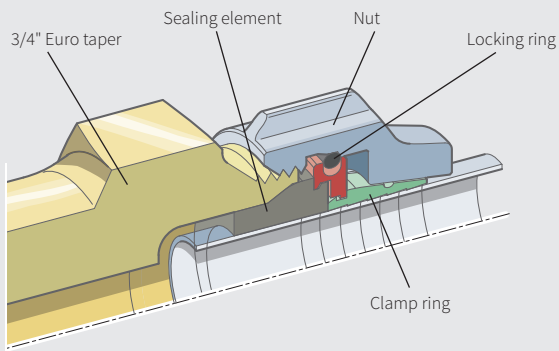
In the 2nd stage, the screw is tightened to the fixed stop, overcoming slight resistance, and the clamp ring is tightened to a precisely predetermined point. The connection is 100 % tight.

**A11 Compression Adapter Set
for blank, nickel- and chrome-plated Copper Pipes,
Carbon Steel Pipes and Stainless Steel Pipes**

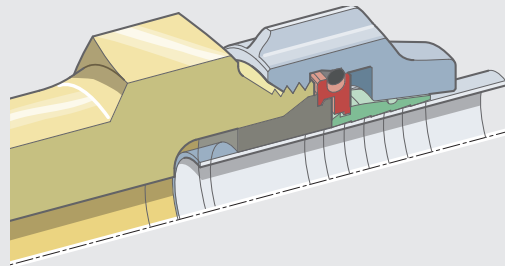
2 pcs. flexibly sealing, extended clamp rings for high pulling forces, no support sleeves required, ribbed nut (wrench size 30 mm), with 2-stage technology (except F11174), with fixed stop.



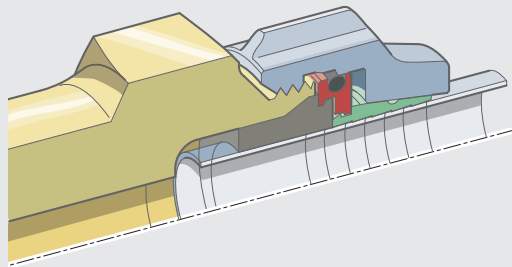
Article no.	Dimensions	Version
F11171	12x1 mm x G3/4f Euro taper	nickel-plated
F11172	14x1 mm x G3/4f Euro taper	nickel-plated
F11170	15x1 mm x G3/4f Euro taper	nickel-plated
F11173	16x1 mm x G 3/4f Euro taper	nickel-plated
F11174	18x1 mm x G 3/4f Euro taper	nickel-plated



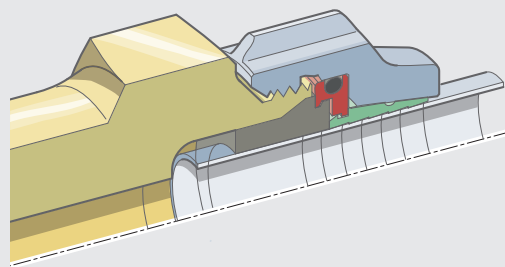
Starting condition



Stage 1: Seal



Stage 2: Clamp



Clamped state: the nut is tightened to the stop

A3 Compression Adapter for Plastic and Multilayer Composite Pipes

A3 Compression Adapter Set for Plastic and Multilayer Composite Pipes

2 pcs., consisting of ribbed nut (wrench size 30 mm), plastic clamp ring and sleeve, O-ring seal on the sleeve, with fixed stop. (There is no need to check the minimum tightening torque)



Applications of A3

The compression adapter is used in heating systems, although the pressure and temperature load have to be compared against the pipe manufacturer's information.

Article no.	Dimensions	Version
F11401	12x2 mm x G3/4f Euro taper	nickel-plated
F11404	14x2 mm x G3/4f Euro taper	nickel-plated
F11415	16x1.5 mm x G3/4f Euro taper	nickel-plated
F11405	16x2 mm x G3/4f Euro taper	nickel-plated
F11412	16x2.2 mm x G3/4f Euro taper	nickel-plated
F11407	17x2 mm x G3/4f Euro taper	nickel-plated
F11414	17x2.5 mm x G3/4f Steel pipe	nickel-plated
F11408	18x2 mm x G3/4f Euro taper	nickel-plated
F11409	18x2.5 mm x G3/4f Euro taper	nickel-plated
F11410	20x2 mm x G3/4f Euro taper	nickel-plated
F11418	20x2.25 mm x G3/4f Euro taper	nickel-plated
F11416	20x2.5 mm x G3/4f Euro taper	nickel-plated
F11417	20x2.8 mm x G3/4f Euro taper	nickel-plated

Suitable Pipes for A3 and F3

Suitable Pipes

Simplex Armaturen & Systeme GmbH does not have access to pipe manufacturers' technical modifications and therefore reserves the right make adjustments and technical amendments to its compression adapters. For material specifications please refer to the relevant pipe manufacturer's specifications.

Pipes which meet the following technical requirements are generally suitable:

DIN 16833/16834	Polyethylene pipes with raised temperature resistance (PE-RT) – General quality requirements, testing and dimensions
DIN 16892	Cross-linked high-density polyethylene (PE-X) pipes – General quality requirements and testing
DIN 16893	Cross-linked high-density polyethylene (PE-X) pipes – Dimensions
DIN 16894	Cross-linked medium-density polyethylene (PE-MDX) pipes – General quality requirements and testing
DIN EN ISO 15875	Plastic piping systems for cold and hot water systems – Cross-linked polyethylene (PE-X)
DIN EN ISO 15874	Plastic piping systems for cold and hot water systems – Polypropylene (PP)
DIN EN ISO 15876	Plastic piping systems for cold and hot water systems – Polybutylene (PB)
DIN EN ISO 15877	Plastic piping systems for cold and hot water systems – Chlorinated polyvinyl chloride (CPVC)
DIN 16836	Multilayer composite pipes – Polyolefin-aluminium multilayer pipes
DIN 16837	Multilayer composite pipes – Multilayer plastic pipes
DIN EN ISO 21003-2	Multilayer piping systems for hot and cold water installations inside buildings – Part 2: Pipes (ISO 21003-2:2008); German version EN ISO 21003-2:2008

Compression Adapter Service Case Complete Range – reliable Connection

Simplex Compression Adapter Service Case

The Simplex service case means that you are prepared for all standard installations involving compression adapters. Proven millions of times over on the job, the case includes types A1, A11 and A3 in all standard dimensions for all common types of pipes and can be topped up to meet your individual needs. A case is available with calibration arbor and digital callipers for handling plastic and multilayer composite pipes.



Article no. F11440

Service case with 21 sets of Simplex nickel-plated brass compression adapters, connection adapters and nipples (6 no.).

Article no. F11441

Additionally with digital callipers and calibration arbor

Contents of Compression Adapter Service Case

A11 Compression Adapter

For blank, nickel-plated and chrome-plated copper pipes, carbon steel pipes and stainless steel pipes.

Article no.	Dimensions	Set
F11171	12x1 mm x G3/4f Euro taper	1
F11170	15x1 mm x G3/4f Euro taper	2
F11173	16x1 mm x G3/4f Euro taper	1

A1 Compression Adapter

For blank copper pipes and carbon steel pipes

Article no.	Dimensions	Set
F11192	18x1 mm x G3/4f Euro taper	1

One set consists of 2 compression adapters.

A3 Compression Adapter

For plastic and multilayer composite pipes

Article no.	Dimensions	Set
F11401	12x2 mm x G3/4f Euro taper	1
F11404	14x2 mm x G3/4f Euro taper	2
F11415	16x1.5 mm x G3/4f Euro taper	1
F11405	16x2 mm x G3/4f Euro taper	2
F11412	16x2.2mm x G3/4f Euro taper	1
F11407	17x2 mm x G3/4f Euro taper	2
F11414	17x2.5mm x G3/4f Euro taper	1
F11408	18x2 mm x G3/4f Euro taper	1
F11410	20x2 mm x G3/4f Euro taper	2
F11418	20x2.25 mm x G3/4f Euro taper	1
F11416	20x2.5 mm x G3/4f Euro taper	1
F11417	20x2.8 mm x G3/4f Euro taper	1

Steel Pipe Adapter with Male Thread

Nickel-plated, for steel pipe (steel pipe according to DIN EN 10255)

Article no.	Dimensions	Pc.
F10461	Steel pipe 3/8" x R1/2	1
F10463	Steel pipe 1/2" x R1/2	1

Connection Nipple

Nickel-plated, self-sealing

Article no.	Dimensions	Pc.
F10390	G1/2m x G3/4m Euro taper	2

Coupling Nipple

Nickel-plated

Article no.	Dimensions	Pc.
F10393	G 3/4m Euro taper	2

VSH SUPER Compression Fittings, metallic sealed: Fast and easy Installation

VSH SUPER brass compression fittings can be used for different types of pipe and be concealed under plaster with ease. VSH compression fittings have proved themselves many times over on account of their secure and fast installation. They represent an ideal addition to other systems and, under certain conditions, can also be reused. Clamp technology ensures clean and tidy installation without the need for an open flame, making them ideal for use in occupied premises, for modernisation, extensions and repairs.

Union Nut

The VSH SUPER compression fitting has a hexagonal nut. This makes ultra-simple installation possible with standard tools, like spanners.

The Benefits:

- ◆ Heavy version of the unforaged nut, but made of hexagonal material for use with standard spanners
- ◆ Low tolerance spanner surface
- ◆ The turning nut has a polished appearance

Proven Quality

VSH has decades of experience and can look back on millions of international and national applications. Hardly any other compression fitting is as easy to use and provides as many advantages as the VSH SUPER – quality down to the last detail.

Applications:

- ◆ Suitable for domestic water systems according to DVGW Worksheet W 534 and DVGW DIN 1988, pipe materials: copper pipe DIN EN 1057 and stainless steel pipe DIN EN 10312, DVGW GW 541 dimensions 12 to 42 mm, certification no. DW-8511AQ2006.
- ◆ Suitable for gas installations according to DVGW Worksheet G 260/I the 2nd gas group, according to DIN 3387 (removable pipe connections for metal gas pipes / smooth pipe connectors) and in accordance with DVGW G 600, TRGI 2008, pipe material: copper pipe according to DIN EN 1057 and DVGW GW 392, semi-hard (R250), dimensions 12 to 22 mm, certification no. NG-4502BL6101 (use support sleeve).
- ◆ According to DIN 1988 and DVGW worksheet G 600, TRGI 2008 VSH SUPER brass compression fittings may be installed under plaster.



Straight Coupling
S1200/301



Reduced Coupling
S1201/301



Straight Connector
w. Female Thread
S1204/303



Stop End
S1206/323



Angle Adapter 90°
w. Male Thread
S1212/402TA



Angle Adapter 90°
w. Female Thread
S1214/403



Angle T-piece*
S1235/601C



T-piece w. Male Thread
S1225/615



Crosspiece
S1230/901



Reducing Ring
S1468/68

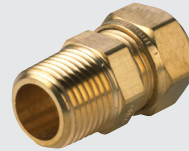
More technical information, such as approvals and installation instruction,
*Not approved for gas installations!



Slip Coupling without Stop
S1208/301BP



Straight Coupling
with Air Vent
S1250/301V



Straight Connector
w. Male Thread
S1202/302TA



Angle Adapter 90°
S1210/401



Reduced Angle Adapter 90°
S1211/401



Angle Adapter 90°
with Air Vent*
S1251/401V



Wall Plate*
S1240/403W



T-piece
S1220/601EQ



Reduced T-piece
S1221/601



T-piece w. Female Thread
S1223/617



T-piece w. Male Thread
S1226/631



T-piece w. Female Thread
S1224/684



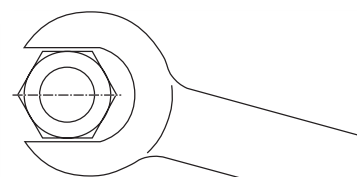
Compression Nut
S1280/63



Compression Ring
S1281/65



Support Sleeve



Compression Adapters and Accessories

A1 Compression Adapter Set

for blank Copper Pipes and Carbon Steel Pipes

(2 pcs.), flexibly sealing, no support sleeves required, SW 30 ribbed nut, recommended tightening torque: 40 Nm.



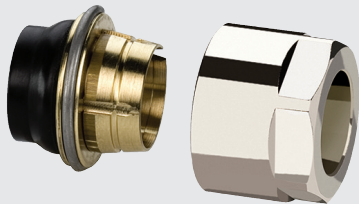
Article no.	Dimensions	Version
F11187	10x1 mm x G3/4f Euro taper	nickel-plated

Design Compression Adapters

The following two design compression adapter sets are ideal for the connection of design bathroom fittings:

F11 Design Compression Adapter Set for blank, nickel- and chrome-plated Copper Pipes, Carbon Steel Pipes and Stainless Steel Pipes

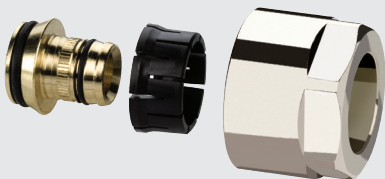
(2 pcs.), flexibly sealing, extended clamp ring for high pulling forces, no support sleeves required, SW 27 nut, with 2-step technology and fixed stop.



Article no.	Dimensions	Version
F11132	15 x 1 mm x G3/4f Euro taper	chrome-plated

F3 Design Compression Adapter Set for Plastic and Multilayer Composite Pipes

(2 pcs.) consisting of SW 27 nut, plastic clamp ring and sleeve, O-ring seal on the sleeve, with fixed stop.



Article no.	Dimensions	Version
F11482	16 x 2 mm x G3/4f Euro taper	chrome-plated
F11483	17 x 2 mm x G3/4f Euro taper	chrome-plated

G5 Connection Set

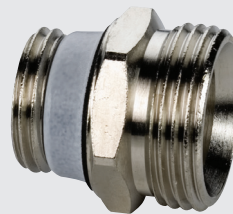
Screw connections (2 pcs.)



Article no.	Dimensions	Version
F10369	Rp3/8 x G 3/4f Euro taper	nickel-plated
F10370	Rp1/2 x G 3/4f Euro taper	nickel-plated

Connection Nipple with Euro Taper

Self tightening with self-sealing thread.



Article no.	Dimensions	Version
F10389	G1/2m x G3/4m Euro taper	blank
F10390	G1/2m x G3/4m Euro taper	nickel-plated

Coupling Nipple with Euro Taper



Article no.	Dimensions	Version
F10392	G3/4m Euro taper	blank
F10393	G3/4m Euro taper	nickel-plated

Blind Plug with Euro Taper

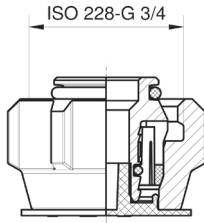


Article no.	Dimensions	Version
F10706	G 3/4m Euro taper	blank

Dimensional Drawings for Compression Adapters

Compression Adapter

A3

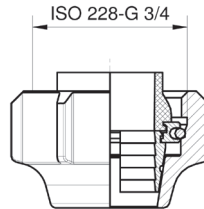


Art. no.	Connection dimension	Thread	SW
F11401	12 x 2.0	G3/4f ET	30
F11404	14 x 2.0	G3/4f ET	30
F11415	16 x 1.5	G3/4f ET	30
F11405	16 x 2.0	G3/4f ET	30
F11412	16 x 2.2	G3/4f ET	30
F11407	17 x 2.0	G3/4f ET	30
F11414	17 x 2.5	G3/4f ET	30
F11408	18 x 2.0	G3/4f ET	30
F11409	18 x 2.5	G3/4f ET	30
F11410	20 x 2.0	G3/4f ET	30
F11418	20 x 2.25	G3/4f ET	30
F11416	20 x 2.5	G3/4f ET	30
F11417	20 x 2.8	G3/4f ET	30

SW = Wrench size
 ET = Euro taper
 Dimensions in mm

Compression Adapter

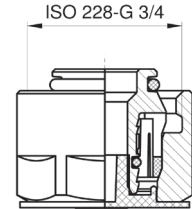
A11



Art. no.	Connection dimension	Thread	SW	Min. socket depth
F11171	12 x 1	G3/4f ET	30	23
F11172	14 x 1	G3/4f ET	30	23
F11170	15 x 1	G3/4f ET	30	23
F11173	16 x 1	G3/4f ET	30	23
F11174	18 x 1	G3/4f ET	30	23

Design Compression Adapter

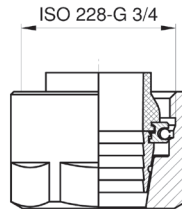
F3



Art. no.	Connection dimension	Thread	SW
F11482	16 x 2.0	G3/4f ET	27
F11483	17 x 2.0	G3/4f ET	27

Design Compression Adapter

F11



Art. no.	Connection dimension	Thread	SW	Min. socket depth
F11132	15 x 1	G3/4f ET	27	23

More dimensional drawings can be found on our website at www.simplex-armaturen.de

