

## Heating Accessories

## 6

6



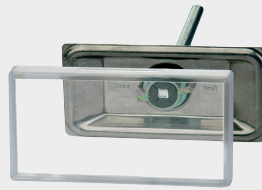
- *Signs, Sign Holders and Text Strips*
- *Rosettes and Design Covers*
- *Assembly Accessories*
- *Spare Parts*

Universal Holder with Fixing Strap



P. 240

Universal Holder with Quick Release Rod



P. 241

Welding Holder



P. 242

Screw Holder



P. 242

Special Labels for Universal, Welding and Screw Holder



P. 243

Blank Signs with 2 Blank Strips



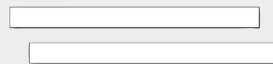
P. 243

Blank Signs with Company Imprint



P. 245

Blank Strip



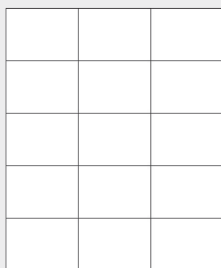
P. 245

QUICK Sign Holder with Quick Fastener Strap



P. 246

Special Labels for QUICK Sign Holder



P. 246

Wall Rosette



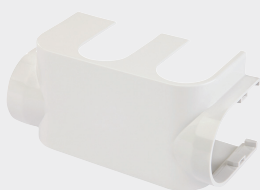
P. 247

Double Rosette



P. 248

Design Cover



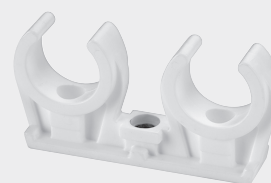
P. 249

Pipe Mounting Clip, Single



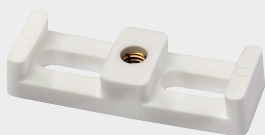
P. 252

Pipe Mounting Clip, Double



P. 253

Clip Bridge for 2 Pipe Mounting Clips



P. 253

Pressure Test Bridge



P. 254

Protective Cap for H-Module Connection



P. 255

Construction Plug with Brass Thread, Self-sealing



P. 256

FIX KIT Radiator Connection Set



P. 257

FIX KIT Copper Pipe Elbow



P. 259

Tools



P. 259

Spare Parts



P. 261

# UNIVERSAL HOLDER WITH FIXING STRAP


## Universal Holder with Fixing Strap

PG = 750

Sign holder made of stainless steel 1.4016 and heat-resistant plastic, with fixing strap up to 2" and transparent cover, for signs 100 x 50 mm, removable sign plate for pipe insulation.

- Components made of stainless steel and plastic
- Tool-free installation
- Vertical and horizontal attachment possible




Type	Suitable for		Article no.
Universal Holder	signs 100 x 50 mm	10	F55002

## Extension Strap for Universal Holder

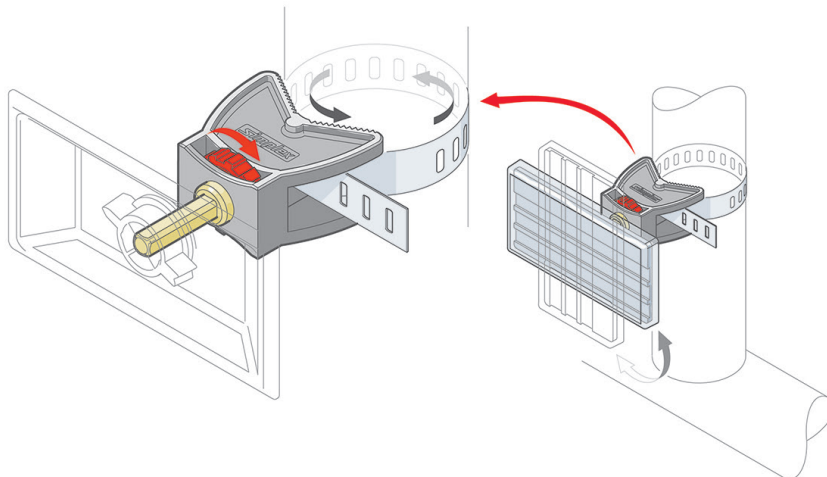
PG = 750

- Material: Stainless steel



Type	Dimension [mm]		Article no.
Extension Strap - 240	240	1	F55011
Extension Strap - 5000	5000	1	F55013

Tighten fixing straps easily without tools.



# UNIVERSAL HOLDER WITH QUICK RELEASE ROD


## Universal Holder with Quick Release Rod PG = 750

6

Sign holder made of stainless steel 1.4016 and heat-resistant plastic, rectangular threaded rod M 8 made of galvanised steel for fast installation with quick release anchor, with transparent cover, for signs 100 x 50 mm, sign plate can be removed using quick release locking mechanism for easier pipe insulation.  
Quick release anchor F55016 not included, please order separately.

- Components made of stainless steel, galvanised steel and plastic
- Quick release anchor allows for lightning-fast installation - just one quarter of a turn and the rod locks in place
- Large number of installation option possible, e.g. wall installation, directly on the pipe using standard pipe clamps, all installation systems include M8 fastener, etc.
- Vertical and horizontal attachment possible




Type	Suitable for		Article no.
<b>Univ. Holder Release Rod</b>	signs 100 x 50 mm	10	F55014

## Anchor for Universal Holder with Quick Release Rod PG = 750

Special anchor for quick release rod, variable socket depth, locks in place using just one quarter of a turn.

- Material: Plastic



Type	Suitable for		Article no.
<b>Anchor f. Holder Release Rod</b>	universal holder with quick release rod	50	F55016

## WELDING HOLDER

Sign holder made of stainless steel 1.4016 with steel welding pin 110 mm long and transparent cover, for signs 100 x 50 mm, removable sign plate for pipe insulation.

- Components made of stainless steel, steel and plastic
- Vertical and horizontal attachment possible

### Welding Holder

PG = 750



Type	Suitable for		Article no.
Welding Holder	signs 100 x 50 mm	25	F55004

## SCREW HOLDER

Sign holder made of stainless steel 1.4016 with transparent cover, for signs 100 x 50 mm.

- Components made of stainless steel and plastic
- Vertical and horizontal attachment possible

### Screw Holder

PG = 750



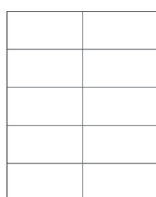
Type	Suitable for		Article no.
Screw Holder	signs 100 x 50 mm	25	F55006


# SPECIAL LABELS FOR UNIVERSAL, WELDING AND SCREW HOLDER

Heat resistant labels, printable with laser printer, 10 x A4 sheets with 10 labels each, print template to download.

- Special weather-resistant film
- Labelling by hand or with laser printer
- Use your own design
- Can be used as an ad space

## Special Labels for Universal, Welding and Screw Holder PG = 750



Type	Dimensions [mm]			Article no.
	A	B		
Special Labels f. Univ. Holder	100	50	100	F55015


# BLANK SIGNS, 100 X 50 MM

Signs for Simplex sign holders.


- Material: Plastic

## Blank Signs without Blank Strip PG = 750




Type	Colour	Dimensions [mm]			Article no.
		A	B		
Signs - white	white	100	50	25	F55101.01
Signs - grey	grey	100	50	25	F55101.03
Signs - green	green	100	50	25	F55101.04
Signs - blue	blue	100	50	25	F55101.05
Signs - red	red	100	50	25	F55101.06
Signs - yellow	yellow	100	50	25	F55101.07
Signs - orange	orange	100	50	25	F55101.11

**Blank Signs with 2 Blank Strips**
**PG = 750**


Type	Colour	Dimensions [mm]			Article no.
		A	B		
Signs 2 Strips - white	white	100	50	25	F55103.01
Signs 2 Strips - grey	grey	100	50	25	F55103.03
Signs 2 Strips - green	green	100	50	25	F55103.04
Signs 2 Strips - blue	blue	100	50	25	F55103.05
Signs 2 Strips - red	red	100	50	25	F55103.06
Signs 2 Strips - yellow	yellow	100	50	25	F55103.07
Signs 2 Strips - orange	orange	100	50	25	F55103.11

**Blank Signs with 3 Blank Strips**
**PG = 750**


Type	Colour	Dimensions [mm]			Article no.
		A	B		
Signs 3 Strips - white	white	100	50	25	F55104.01
Signs 3 Strips - grey	grey	100	50	25	F55104.03
Signs 3 Strips - green	green	100	50	25	F55104.04
Signs 3 Strips - blue	blue	100	50	25	F55104.05
Signs 3 Strips - red	red	100	50	25	F55104.06
Signs 3 Strips - yellow	yellow	100	50	25	F55104.07
Signs 3 Strips - orange	orange	100	50	25	F55104.11




## BLANK SIGNS WITH COMPANY IMPRINT, 100 X 50 MM

Signs for Simplex sign holders, company imprint on the head runner, hot stamped, size of imprint (W x H): max. 96 x 10 mm (2 lines of text), logo imprint possible.  
(Please send logo in printable resolution).

- Material: Plastic

### Blank Signs with Company Imprint and 3 Blank Strips PG = 750



Type	Colour	Dimensions [mm]			Article no.
		A	B		
Signs Imprint - white	white	100	50	25	F55104.51
Signs Imprint - grey	grey	100	50	25	F55104.53
Signs Imprint - green	green	100	50	25	F55104.54
Signs Imprint - blue	blue	100	50	25	F55104.55
Signs Imprint - red	red	100	50	25	F55104.56
Signs Imprint - yellow	yellow	100	50	25	F55104.57
Signs Imprint - orange	orange	100	50	25	F55104.61
Set-up cost per print colour	-	-	-	1	F55000
Single plate share per print colour	-	-	-	1	F55100


## BLANK STRIP

Blank strips for Simplex signs.

- Material: Plastic

### Blank Strip PG = 750



Type	Colour	Dimensions [mm]			Article no.
		A	B		
Blank Strip	white	100	9	100	F55111

# QUICK SIGN HOLDER WITH QUICK FASTENER STRAP


## QUICK Sign Holder with Quick Fastener Strap

PG = 750

Sign holder made of plastic, with quick fastening strap made of heat-resistant polyamide, up to 200 mm pipe outside diameter, for self-printable labels 70 x 50.8 mm.

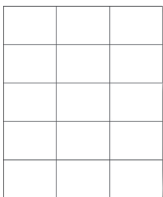
- Components made of plastic
- Max. operating temperature (for installation on pipes): 90 °C, max. ambient temperature: 40 °C
- Tool-free and fast installation via quick strap attachment
- Labelling by hand or with laser printer
- Can also be mounted on insulation
- Vertical and horizontal attachment possible



Type	Suitable for		Article no.
<b>Sign Holder QUICK</b>	labels 70 x 50,8 mm	10	F55022

## Special Labels for QUICK Sign Holder

PG = 750



Weather-resistant labels, printable with laser printer, 10 x A4 sheets with 15 labels each, print template to download.

- Special weather-resistant film
- For higher humidity levels and for direct sunlight
- Labelling by hand or with laser printer
- Use your own design
- Can be used as an ad space

Type	Dimensions			Article no.
	A [mm]	B [mm]		
<b>Special Labels for QUICK</b>	70	50,8	150	F55023

## Quick Fastener Strap for QUICK Sign Holder

PG = 750



Quick fastener strap made of grey, heat-resistant plastic.

- Material: Plastic

Type	Dimensions			Article no.
	A [mm]	B [mm]		
<b>Fastener Strap for QUICK</b>	775	9	100	F55024

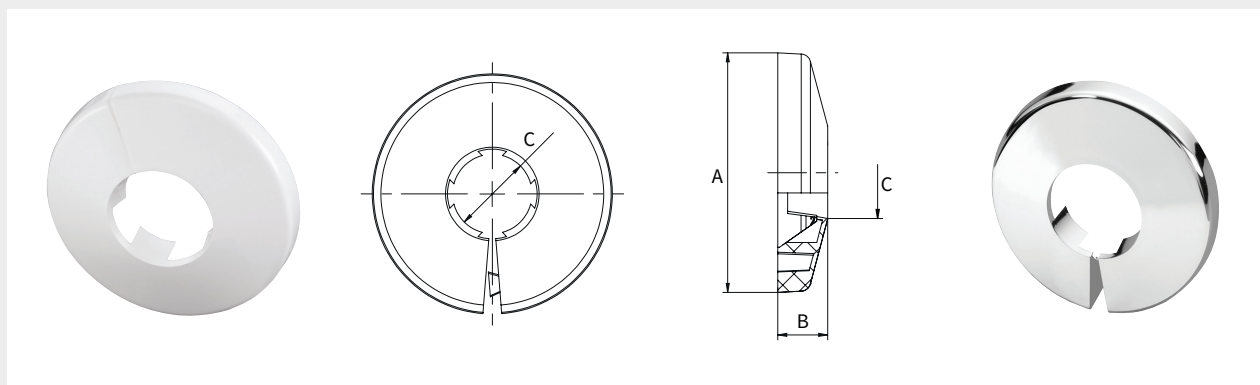
## WALL ROSETTES


Wall rosette with dovetail fastener, one-piece.

- Components made of plastic

### Wall Rosette

PG = 740



Type	Colour	Dimensions [mm]				Article no.
		A (∅)	B	C (∅)		
Wall Rosette - 12	white*	48	10	12	10/100	F44001
Wall Rosette - 15	white*	48	10	15	10/100	F44002
Wall Rosette - 18	white*	48	10	18 - 3/8"	10/100	F44003
Wall Rosette - 22	white*	53	10	22 - 1/2"	10/100	F44004
Wall Rosette - 28	white*	60	12	28 - 3/4"	10/100	F44005
Wall Rosette - 33	white*	66	12	33 - 1"	10/100	F44006
Wall Rosette Chrome - 12	chrome	48	10	12	10/100	F44031
Wall Rosette Chrome - 15	chrome	48	10	15	10/100	F44032
Wall Rosette Chrome - 18	chrome	48	10	18 - 3/8"	10/100	F44033
Wall Rosette Chrome - 22	chrome	53	10	22 - 1/2"	10/100	F44034
Wall Rosette Chrome - 28	chrome	60	12	28 - 3/4"	10/100	F44035
Wall Rosette Chrome - 33	chrome	66	12	33 - 1"	10/100	F44036

\* similar to RAL 9016



## DOUBLE ROSETTE

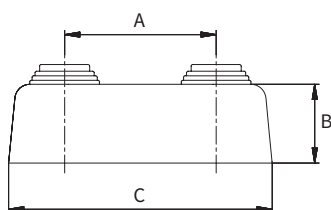
Double rosette, two-piece, for pipes Ø 10 - 22 mm.


The stepped pipe bushings can be easily cut off with the pocket knife and made to fit the respective pipe diameter (10-22 mm).

- Components made of plastic

### Double Rosette, High Version

PG = 740



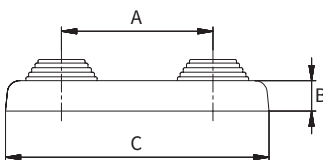
Type	Colour	Pipe (Ø) [mm]	Dimensions [mm]				Article no.
			A	B	C		
<b>Double Rosette - 35</b>	white*	10 - 22	35	26	72	10/50	F44201
<b>Double Rosette - 40</b>	white*	10 - 22	40	26	77	10/50	F44202
<b>Double Rosette - 45</b>	white*	10 - 22	45	26	82	10/50	F44203
<b>Double Rosette - 50</b>	white*	10 - 22	50	26	87	10/50	F44204
<b>Double Rosette Chrome - 50</b>	chrome	10 - 22	50	26	87	10/50	F44224


\* similar to RAL 9016



### Double Rosette, Flat Version

PG = 740



Type	Colour	Pipe (Ø) [mm]	Dimensions [mm]				Article no.
			A	B	C		
<b>Double Rosette Flat - 50</b>	white*	10 - 22	50	10	87	10/50	F44214
<b>Double Ros. Flat Chrome - 50</b>	chrome	10 - 22	50	10	87	10/50	F44234

\* similar to RAL 9016



## DESIGN COVERS FOR VALVES


Design cover made of plastic with polished optics, to clip on.

- Components made of plastic

### Design Cover for Simplex H-Module PG = 740

For H-modules with 50 mm axial distance.



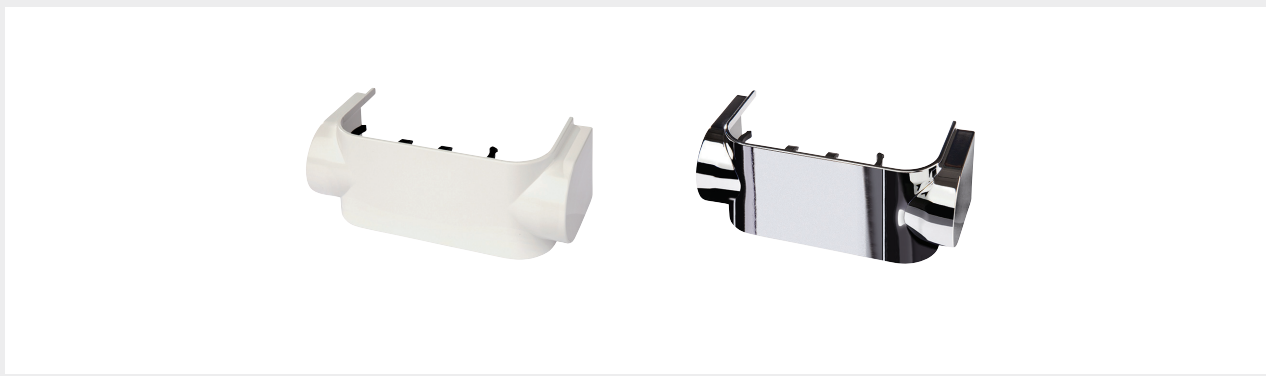
Type	Version	Colour		Article no.
<b>Cover HB - D W</b>	straight	white*	1 / 20	F10093
<b>Cover HB - E W</b>	angle	white*	1 / 20	F10094
<b>Cover HB - D C</b>	straight	chrome	1 / 20	F10095
<b>Cover HB - E C</b>	angle	chrome	1 / 20	F10096


\* similar to RAL 9016



### Design Cover for VARIOCON H-Module PG = 740

For angle versions, for left and right connection, suitable for F12001 - F12004, F10026 and F10027.



Type	Version	Colour		Article no.
<b>Cover HB VARIOCON - W</b>	angle, left or right	white*	1 / 10	F12025
<b>Cover HB VARIOCON - C</b>	angle, left or right	chrome	1 / 10	F12026

\* similar to RAL 9016




### Design Cover for VARIODESIGN Regulator Valve

PG = 740

For left and right connection, suitable for F12060, F12061, F12065 and F12066 for installation on bathroom radiators.



Type	Version	Colour		Article no.
<b>Cover VA VARIODESIGN - W</b>	right or left	white*	1 / 10	F12070
<b>Cover VA VARIODESIGN - C</b>	right or left	chrome	1 / 10	F12071

\* similar to RAL 9016




### Design Cover for VARIOCON Regulator Valve

PG = 740

For angle or straight connection, suitable for F12020 and F12018 for installation on bathroom radiators.



Type	Version	Colour		Article no.
<b>Cover VA VARIOCON - W ri.</b>	right	white*	1 / 10	F12034
<b>Cover VA VARIOCON - C ri.</b>	right	chrome	1 / 10	F12035
<b>Cover VA VARIOCON - W le.</b>	left	white*	1 / 10	F12036
<b>Cover VA VARIOCON - C le.</b>	left	chrome	1 / 10	F12037

\* similar to RAL 9016




## Design Cover for Actuator

PG = 740

Suitable for VARIOCON regulator valves with actuator F12018 (in conjunction with the VARIOCON design cover).



6

Type	Colour		Article no.
Cover STA VARIOCON - W	white*	1 / 20	F12041
Cover STA VARIOCON - C	chrome	1 / 20	F12042

\* similar to RAL 9016

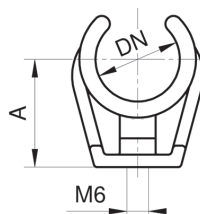



## PIPE MOUNTING CLIPS

- Can be used for pipe, hose or cable installation
  - Simplified installation through the inserted brass sleeve M 6/8
  - Sturdy clamping due to positive connection
  - Unobstructed expansion possible in case of temperature variation
  - Standard base for profile rail
  - Universal and quick installation, rail mountable, ceiling suspension with set screws M 6/8, wall mount using anchors or nails
  - Subsequent insulation of the pipe possible
  - No risk of rusting: plastic PPH and brass tread sleeves
- 
- Components made of plastic and brass
  - Temperature resistant from -30 °C up to +120 °C

### Pipe Mounting Clip, Single

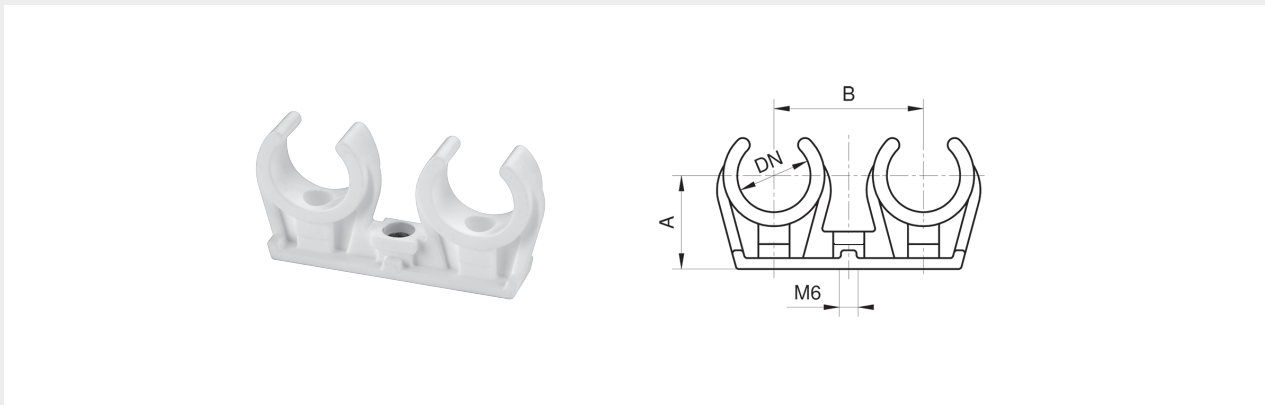
PG = 921




Type	Dimensions [mm]			Article no.
	DN	A		
Clip Single - 6	6	13	50/5000	982606
Clip Single - 8	8	14	50/5000	982608
Clip Single - 10	10	17	50/1000	982610
Clip Single - 12	12	18	50/1500	982612
Clip Single - 14/15	14 / 15	19	50/2000	98261415
Clip Single - 16/18	16 / 18	23	50/1000	98261618
Clip Single - 20/22	20 / 22	28	25/1000	98262022
Clip Single - 24	24	30	25/500	982624
Clip Single - 28	28	34	25/500	982628
Clip Single - 35	35	37	25/500	982635
Clip Single - 42	42	42	20/300	982642



Pipe Mounting Clip, Double PG = 921




Type	Dimensions [mm]				Article no.
	DN	A	B		
Clip Double - 6	6	13	23	50/1000	982706
Clip Double - 8	8	14	26	50/1000	982708
Clip Double - 10	10	17	29	50/1000	982710
Clip Double - 12	12	18	33	50/500	982712
Clip Double - 14/15	14 / 15	19	36	50/700	98271415
Clip Double - 16/18	16 / 18	23	40	25/500	98271618
Clip Double - 20/22	20 / 22	28	44	25/200	98272022
Clip Double - 24	24	30	48	25/200	982724
Clip Double - 28	28	34	53	20/300	982728

Clip Bridge for 2 Pipe Mounting Clips PG = 921

For 2 lines with different nominal diameters.



Type	Version		Article no.
Clip Bridge	for two pipe mounting clips	50	9828

## PRESSURE TEST BRIDGES FOR H-MODULE CONNECTION

Pressure test bridge for pressure testing, venting and draining, axial distance 50 mm, with air plug, connection of fill and drain plugs possible.

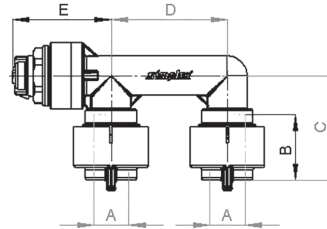
**Please note:** Use for pressure test, maximum test pressure of 15 bar. Not suitable for continuous heating mode.


- Components made of plastic and brass
- Sealing materials: EPDM
- Fixed axial distance of 50 mm
- Reduced installation time
- Reusable

### Pressure Test Bridge with Quick Fastener

PG = 722

For copper, carbon steel and stainless steel pipes, tool-free installation.

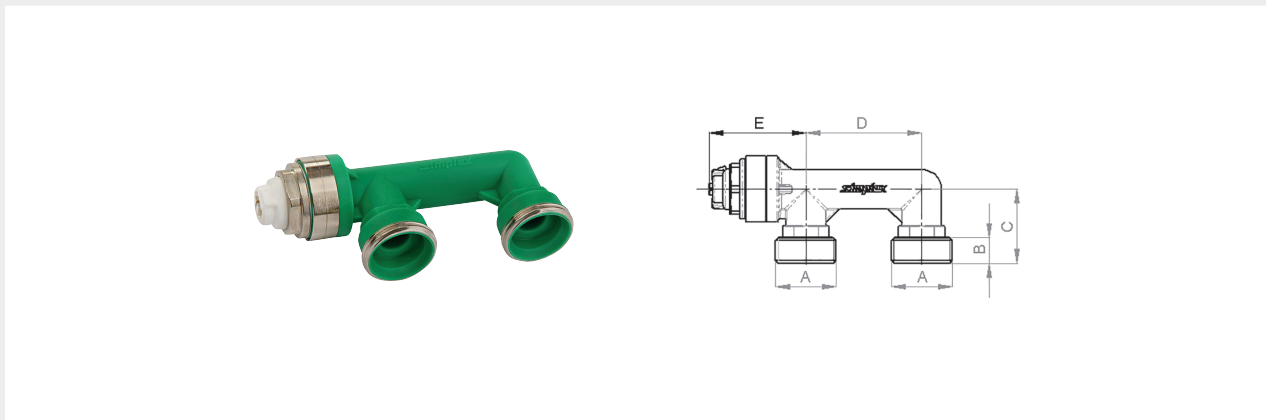



Type	Connection A Ø [mm]	Dimensions [mm]					Article no.
		B	C	D	E		
Pressure Test Bridge Fast	15	28	45	50	43	1 / 5	F10088



**Pressure Test Bridge with Euro Taper** PG = 722

Suitable with Simplex compression adapters, for all types of pipes.



Type	Connection A (ET)	Dimensions [mm]					Article no.
		B	C	D	E		
<b>Pressure Test Bridge ET</b>	G 3/4" M	11	32	50	42	1 / 5	F10098

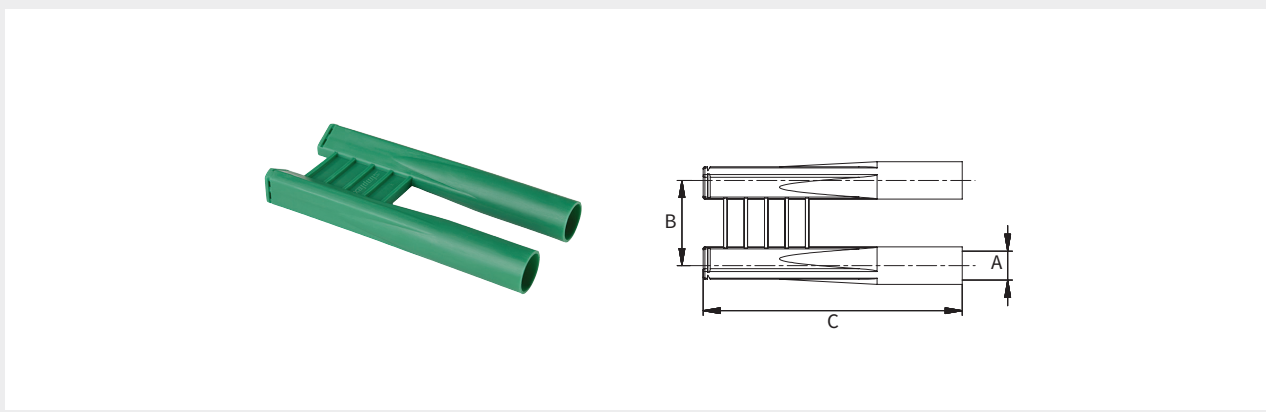



## PROTECTIVE CAP FOR H-MODULE CONNECTION

Protective cap for protecting and fixing the radiator connection pipes, 50 mm spacer.

- Components made of plastic and brass
- Dirt protection, damage protection
- Reusable

**Protective Cap for H-Module Connection** PG = 722



Type	Connection A Ø [mm]	Dimensions [mm]			Article no.
		B	C		
<b>Protective Cap</b>	12 - 16	50	152	5 / 25	F10041



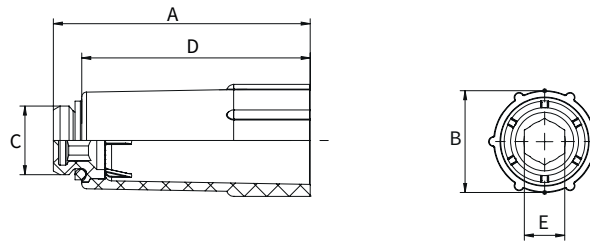
# CONSTRUCTION PLUGS


Construction plug for sealing threaded connections during construction and pressure testing in heating systems.

- Components made of plastic and brass
- Sealing materials: EPDM
- Max. operating temp.: 110 °C permanent temperature, 130 °C short-term
- Max. operating pressure: 10 bar

## Construction Plug with Brass Thread, Self-sealing

PG = 722



Type	Connection (C)	Dimensions [mm]					Article no.
		A	B	D	E (WS)		
<b>Constr. Plug - white</b>	G 1/2" M	77	30.5	68.5	12	10/100	F22307
<b>Constr. Plug - red</b>	G 1/2" M	77	30.5	68.5	12	10/100	F22308
<b>Constr. Plug - blue</b>	G 1/2" M	77	30.5	68.5	12	10/100	F22309



## FIX KIT RADIATOR CONNECTION SYSTEM


Installation system for radiators with integrated valve for concealed wall connection, axial distance 50 mm.

- **Basic element:** Radiator Connection Module with hanger bolt
  - **For dry construction:** Up to 280 mm long, laterally adjustable profile rail
  - **For masonry installation:** Radiator connection set for wall slots with 100 mm minimum width and 95 mm depth
  - **Supplement:** Insulated 15 mm copper pipe elbow (nickel-plated); is fixed using the connection module, cut to length and connected to a two-pipe radiator H-module
- Components made of galvanised steel and plastic

### FIX KIT Radiator Connection Set, Panel Wall PG = 701

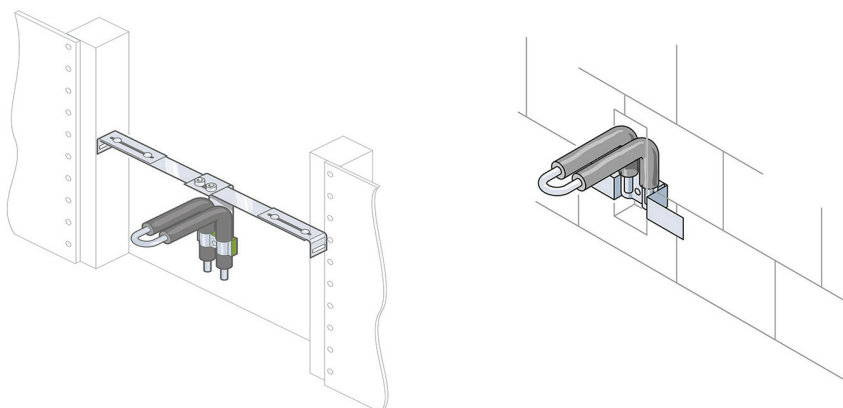
For profile centre distance 625 mm, laterally adjustable 280 mm, without pipe elbow.



Type	Dimensions [mm]						Article no.
	A	B	C	D	E		
FIX KIT TB	55	625	50	48	138	1	F13565



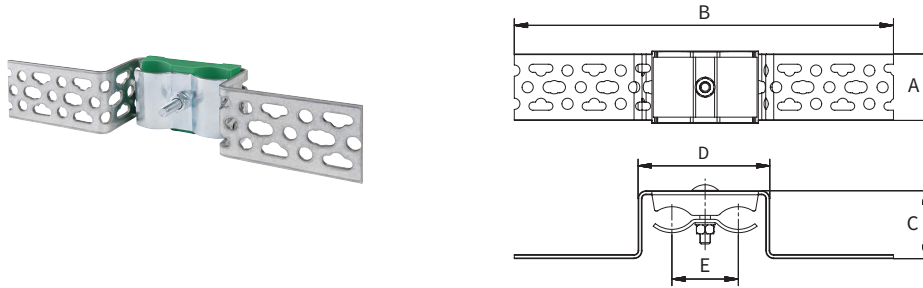
### FIX KIT Radiator Connection Set for dry construction, installed in panel wall and for masonry, installed in stone wall




## FIX KIT Radiator Connection Set, Masonry

PG = 701

Simple version, without pipe elbow.



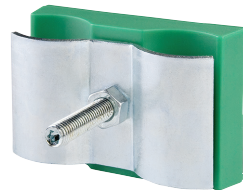
Type	Dimensions [mm]						Article no.
	A	B	C	D	E		
<b>FIX KIT MW</b>	50	285	51	99	50	1	F13566




## FIX KIT Radiator Connection Module

PG = 701

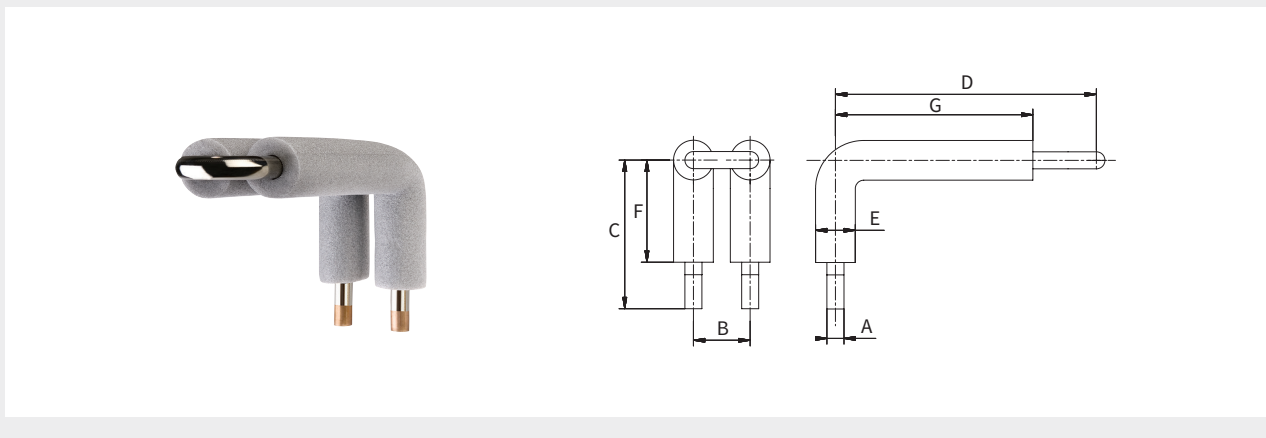
Mounted on hanger bolt.




Type	Axial distance [mm]		Article no.
<b>FIX KIT Connection Module</b>	50	1 / 5	F13568



**FIX KIT Copper Pipe Elbow 15mm with Insulation** PG = 701



Type	Connection A Ø [mm]	Dimensions [mm]							Article no.
		B	C	D	E	F	G		
FIX KIT Pipe Elbow	15	50	131	230	35	90	174	1	F13567




## TOOLS

**H-Module Spanner Wrench Size 30** PG = 922

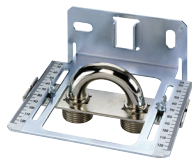


For tightening and loosening H-modules and Simplex compression adapters A series.

- Material: Stainless steel


Type	Dimension (WS) [mm]		Article no.
Spanner H-Module	30	1	F10100

**Assembly Template for Connection Lines of Valve Radiators** PG = 701



Assembly template with metric scale for pre-installing the connection lines, axial distance 50 mm.

- Material: Galvanised sheet metal


Type	Adjustable range [mm]		Article no.
Assembly Template	33-115	1	F10039

**Installation Spanner for Air and Blind Plugs 1 1/4"** PG = 922



Hexagonal spanner.

- Material: Plastic

Type	Dimension (WS) [mm]		Article no.
Spanner Plug	22 / 32 / 40	1 / 5	F11205


### Adjustment Key for Regulator Valve

PG = 990



Adjustment key for infinitely variable pre-setting.

- Material: Plastic

Type	Suitable for		Article no.
<b>Adjustment Key</b>	VARIOCON and VARIODESIGN	10	F11895


### Calibration Arbor

PG = 922



For calibrating plastic and multilayer composite pipes.  
The pipes must be calibrated before installation of compression adapters.

- Material: Plastic

Type	Suitable for		Article no.
<b>Calibration Arbor</b>	plastic and multilayer composite pipe	1 / 5	F11211


### Demounting Clip for TECTITE Push-fit Connections

PG = 922



For easy demounting of TECTITE push-fit connections.

- Material: Plastic

Type	Dimension [mm]		Article no.
<b>TECTITE Dem. Clip - 10</b>	10	5	F60039*
<b>TECTITE Dem. Clip - 15</b>	15	5	F60041
<b>TECTITE Dem. Clip - 18</b>	18	5	F60042
<b>TECTITE Dem. Clip - 28</b>	28	5	F60044*

\* discontinued article


### Demounting Pliers for TECTITE Push-fit Connections

PG = 922



For easy demounting of TECTITE push-fit connections.

- Material: Steel

Type	Dimension [mm]		Article no.
<b>TECTITE Dem. Pliers - 15</b>	15	1	F10508
<b>TECTITE Dem. Pliers - 18</b>	18	1	F10509
<b>TECTITE Dem. Pliers - 22</b>	22	1	F10510*
<b>TECTITE Dem. Pliers - 28</b>	28	1	F10540*

\* discontinued article


### TECTITE Universal Tool/ Push-in Depth Template

PG = 922



Tool for marking the insertion depth, for deburring and for applying a notch on chrome-plated copper pipes.

- Material: Plastic

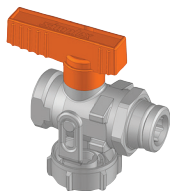
Type	Dimension [mm]		Article no.
<b>TECTITE Universal Tool</b>	10 - 28	1	F60065



## SPARE PARTS


### Lever Handle for KFE-Ball Valve

PG = 990



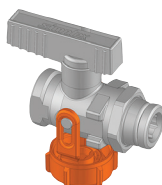
Colour coated.

- Material: Zinc die-cast

Type	Version		Article no.
<b>Handle KFE - H</b>	heating - red	5 / 10	F10102
<b>Handle KFE - S</b>	solar - orange	5 / 10	F10101
<b>Handle KFE - T</b>	potable water - green	5 / 10	F10174


### Cap for KFE Ball Valve

PG = 990



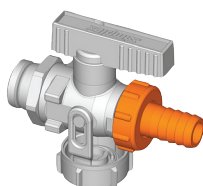
With bracket.

- Material: Nickel-plated brass

Type	Dimension		Article no.
<b>Cap KFE - 3/4</b>	G 3/4" F	10/50	F10643
<b>Cap KFE - 1</b>	G 1" F	10/50	F10504


### Hose Connection for KFE Ball Valve

PG = 990



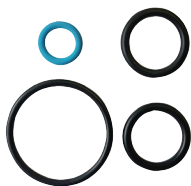
Union nut made of brass, sleeve with O-ring.

- Material: Nickel-plated brass / plastic and zinc die-cast


Type	Version	Suitable for		Article no.
<b>SV KFE - 3/4</b>	plastic / zinc die-cast	KFE ball valve G 1/2"	10/50	F10372
<b>SV KFE - 1</b>	nickel-plated brass	KFE ball valve G 3/4"	10/50	F10345

### Seal Set for H-Mixer

PG = 990

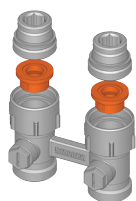


- Material: EPDM


Type	Version		Article no.
<b>Seal Set H-Mixer</b>	set with 4 seals	1 / 10	F10253

### Supply Flow Insert for H-Module (One-pipe and Two-pipe Systems) and Single Valves

PG = 990



- Material: Plastic
- Seal: EPDM


Type			Article no.
<b>VL Insert</b>		10/1000	F10630

### Return Flow Insert for H-Module for One-pipe Systems

PG = 990



- Material: Plastic
- Seal: EPDM

Type	Suitable for		Article no.
<b>RL Insert</b>	F10001, F10003, F10005, F10007	25/100	F10631

### Cone Insert

PG = 990



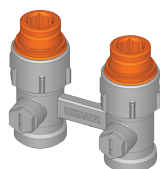
Suitable for Simplex radiator connection valves.

- Material: Plastic
- Seal: EPDM

Type	Nom. diameter		Article no.
<b>Cone Insert</b>	DN 20	10/50	F10090


### Connection Nipple

PG = 990



Suitable for Simplex radiator connection valves, flat seal, self-sealing.

- Material: Brass
- Seal: EPDM


Type	Connection			Article no.
	radiator side	valve side (ET)		
<b>Conn. Nipple - 1/2 x 3/4</b>	G 1/2" M	G 3/4" M	10/50	F10384
<b>Conn. Nipple - 3/8 x 3/4</b>	G 3/8" M	G 3/4" M	10/50	F10503

### Cap for H-Module for One-pipe Systems

PG = 990



- Material: Nickel-plated brass
- Seal: Centellen

Type	Suitable for		Article no.
<b>Cap H-Module One-pipe</b>	F10001, F10003, F10005, F10007	10/50	F10034

### Seal for H-Module for One-pipe Systems

PG = 990



- Material: Centellen

Type	Dimension [mm]	Suitable for		Article no.
<b>Seal H-Module One-pipe</b>	17 x 1	F10001, F10003, F10005, F10007	25/100	F10037

**Cap for MULTIGRIP H-Module** PG = 990



- Material: Plastic

Type	Colour	Suitable for		Article no.
Cap MULTIGRIP	nickle coloured	F13444, F13424	10/50	F13465

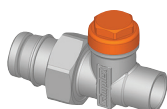
**Cap for VARIOCON Connection Valve** PG = 990



- For article no. F10026, F10027, F12003, F12004.
- Material: Nickle-plated brass
  - Seal: EPDM

Type	Version		Article no.
Cap VARIOCON - DS	with sealing washer	10/50	F10431
Cap VARIOCON - DR	with sealing ring	10/50	F11035

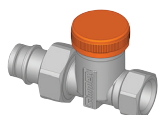
**Cap for Lockshield Valve Type L and Type N** PG = 990



- Material: Nickle-plated brass

Type		Article no.
Cap RV L+N	10/50	F99577

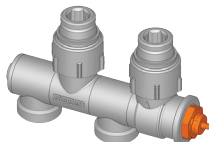
**Cap for Lockshield Valve Type M** PG = 990



- Material: Nickle-plated brass
- Seal: EPDM

Type	Version		Article no.
Cap RV M	with sealing ring	10/50	F11035

**Valve Insert for VARIOCON and VARIODESIGN Regulator Valves** PG = 990



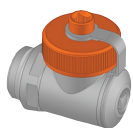
- Adjustable valve insert, thermostatic head connection thread M 30 x 1.5.
- Material: Brass
  - Seal: EPDM

Type	Suitable for		Article no.
Valve Insert V	VARIOCON and VARIODESIGN	1 / 5	F12039

### Cap for Fill and Drain Plug V

PG = 990

- Material: Nickle-plated brass

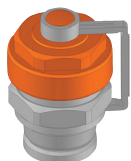



Type	Dimension	Suitable for		Article no.
<b>Cap Fill+Drain Plug V</b>	G 3/4" F	F10605, F10607, F10608, F10613	10/50	F10615

### Cap for Fill and Drain Plug

PG = 990

- Material: Nickle-plated brass
- Seal: EPDM



Type	Dimension	Suitable for		Article no.
<b>Cap Fill+Drain Plug</b>	G 3/4" F	F10628, F10629	10/50	F10642


### Seals for Plugs for Steel and Cast Iron Radiators

PG = 990

Flat seal.

- Material: EPDM, HD-300



Type	Version	Nom. diameter	Dimension [mm]		Article no.
<b>Seals Plugs - EP 4.2</b>	EPDM	DN 32	4.2	25/100	F10933
<b>Seals Plugs - EP 2.5</b>	EPDM	DN 32	2.5	25/100	F10934
<b>Seals Plugs - HD 1.0</b>	HD-300*	DN 32	1.0	25/100	F10927
<b>Seals Plugs - HD 1.5</b>	HD-300*	DN 32	1.5	25/100	F10928
<b>Seals Plugs - HD 2.5</b>	HD-300*	DN 32	2.5	25/100	F10929

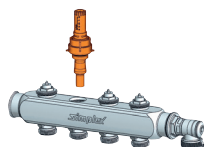
\* non-stick coating

### Flowmeter for Manifolds

PG = 990

For Simplex heating manifolds for surface heating. For setting the flow volume, with locking ring and set-point display.

- Material: Nickle-plated brass, plastic



Type	Version [l/min]		Article no.
<b>Flowmeter Manifold</b>	0 - 5	1 / 10	F18477

### Thermostat Valve Insert for Manifolds

PG = 990

For Simplex heating manifolds for surface heating.

- Material: Brass
- Seal: EPDM



Type	Version		Article no.
<b>Valve Insert Manifold</b>	M 30 x 1.5	1 / 10	F18478

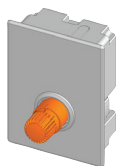
**Valve Insert for Regulation Box and RTL Valve** PG = 990



- Material: Brass
- Seal: EPDM

Type	Suitable for		Article no.
<b>VE - RTL EXCLUSIV</b>	F11829, F11832	1 / 5	F11865
<b>VE - RTL STD. / DUO / Valve</b>	F11828, F11831, F11879, F11882, F11883, F11888, F11889	1 / 5	F11866
<b>VE - TH / RTL-TH / DUO</b>	F11836, F11838, F11848, F11849, F11879	1 / 5	F99076

**RTL/TH Head for Regulation Box and RTL Valve** PG = 606



- White, similar to RAL 9016.
- Material: Plastic, brass

Type	Suitable for		Article no.
<b>Head - RTL-A</b>	F11828, F11829	1 / 5	F35242
<b>Head - TH / DUO</b>	F11848, F11849, F11879	1 / 5	F35243
<b>Head- RTL-I STD./DUO/Valve</b>	F11831, F11879, F11882, F11883	1 / 5	F35351
<b>Head - RTL-I EXCLUSIV*</b>	F11832	1 / 5	F35355

\* with pre-setting 4

**Cover for Regulation Box** PG = 990



- White, similar to RAL 9016.
- Material: Plastic

Type	Suitable for		Article no.
<b>Cover - RTL-I / RTL-TH*</b>	F11831, F11832, F11836, F11838	1	F11834
<b>Cover - RTL-A / TH / DUO</b>	F11848, F11849, F11828, F11829, F11879	1	F11860

\* RTL-TH BASIC and DIGITAL

**FIT 3L Room Temperature Controller for DIGITAL Regulation Box** PG = 990



Type	Suitable for		Article no.
<b>Room Temp. Controller</b>	F11838	1	F11843

## Protective Cap for VK 31 Connection Kit

PG = 990

- Material: Plastic



Type	Colour		Article no.
<b>Protective Cap VK31 - N</b>	nickle coloured	2 / 10	F13414
<b>Protective Cap VK31 - W</b>	white*	2 / 10	F13415


\* similar to RAL 9016

## Covering Rosette for Baseboard Cut-out

Covering rosette for Simplex baseboards.

- Material: Plastic



Type	Colour	Dimensions [mm]		Article no.
<b>Rosette SL - W</b>	white*	12	10	F13455
<b>Rosette SL - G</b>	grey	12	10	F13456
<b>Rosette SL - B</b>	beech	12	10	F13457
<b>Rosette SL - OL</b>	oak light	12	10	F13458
<b>Rosette SL - OD</b>	oak dark	12	10	F13449


\* similar to RAL 9016

## Plug-in Connector for Moulded Corners

PG = 770

- Material: Plastic




Type	Suitable for		Article no.
<b>Plug-in Connector</b>	plug-in connector for moulded corners	1	F70039

## Flat Seal for VK 31 Connection Kit

PG = 990

- Material: EPDM




Type	Dimension [mm]		Article no.
<b>Seal VK31</b>	24 x 2	10	F10624

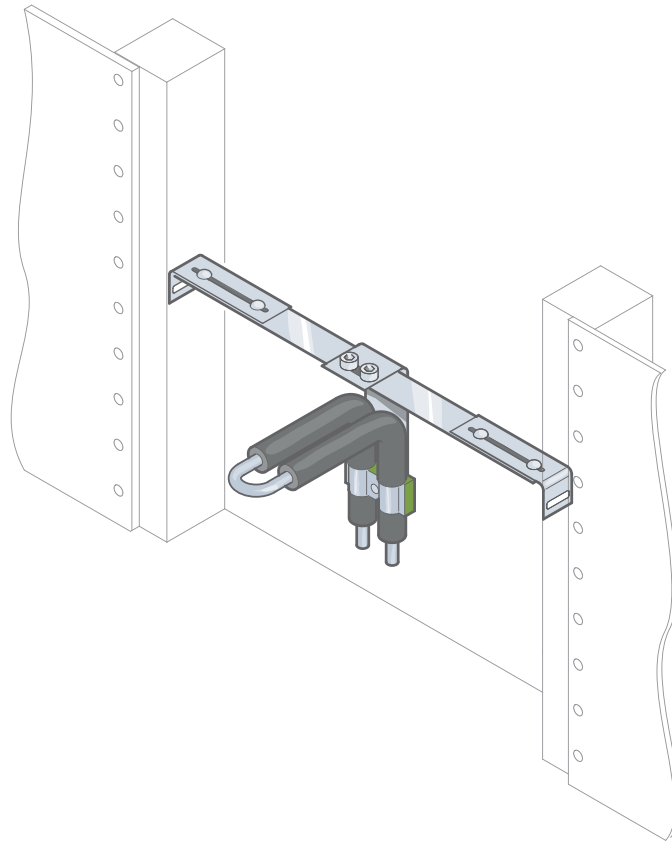
## Transparent Cover for Signs 100 x 50 mm

PG = 750

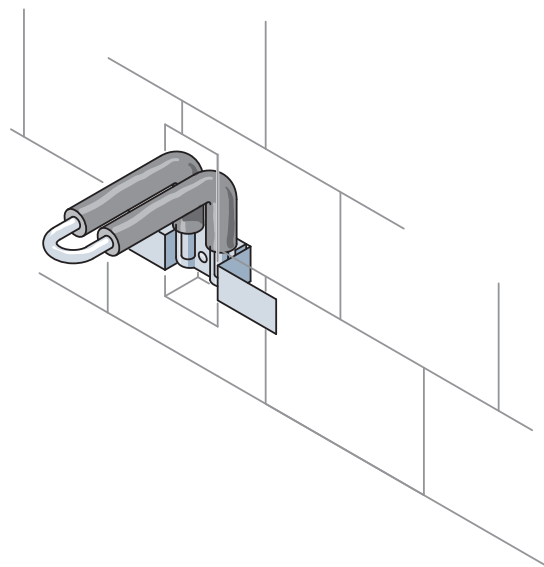
- Material: Plastic



Type	Suitable for		Article no.
<b>Transparent Cover</b>	signs 100 x 50 mm	10	F55010



**Installation system for radiators for concealed wall connection:  
FIX KIT Radiator Connection Set for dry construction, installed in panel wall**



**FIX KIT Radiator Connection Set for masonry, installed in stone wall**