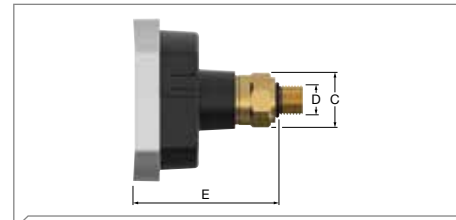
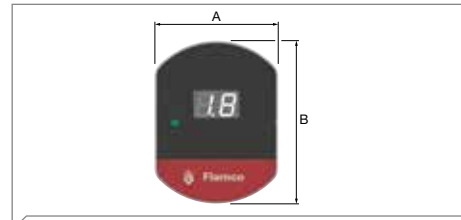
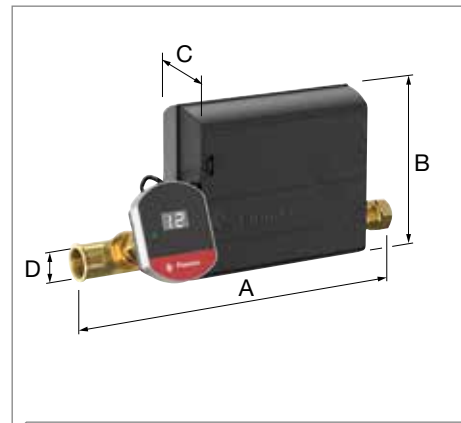


FFlexcon PA - Pressurisation Assistant (23760)



Type	D (")	A (mm)	B (mm)	C (mm)	E (mm)		Order Code
Flexcon PA Pressurisation assistant	1/4	54	71	22	63	1	23760

Flexcon PA AutoFill (23761)



Technical specifications:

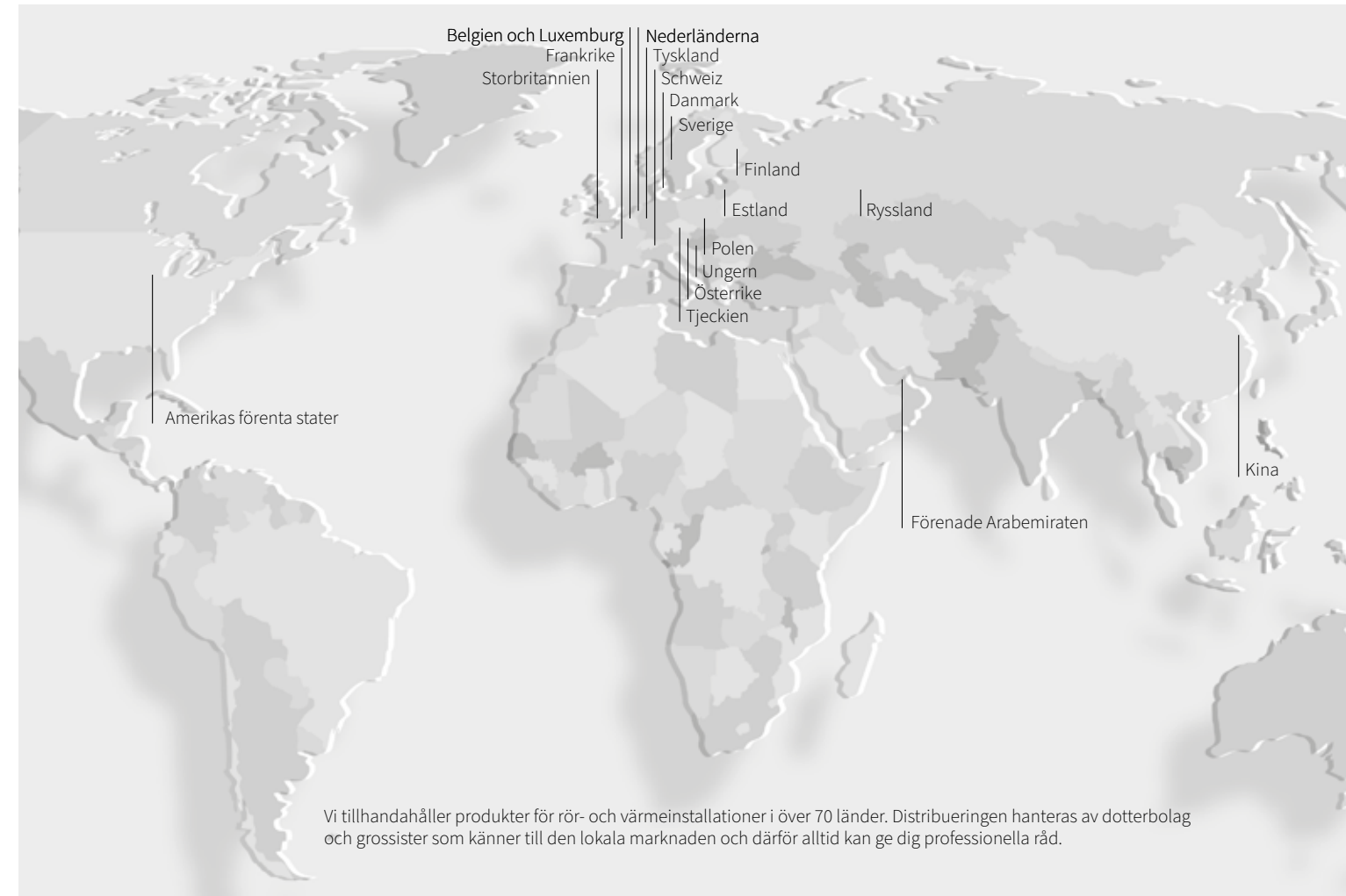
- Suitable for heating systems up to 40,000 litres* with expansion vessel and water-glycol mixtures of up to 50%.
- Flow rate (filling): 0.7 m³ / hour.
- Power supply:
Flexcon PA: 5V AC/DC adapter.
Flexcon PA AutoFill: 12V AC/DC adapter.
- Central heating system temperature: 0°C - 90°C.
- Ambient temperature: 0°C - 40°C.
- For working pressure of up to 3.5 bar.
- Design pressure PN6.

Contents of Flexcon PA AutoFill set:

- Flexcon PA (G 1/4" M)
- AutoFill unit (G 1/2" M)
- T-piece (G 1/2" F)
- Straight fitting (G 1/2" F)
- Valve (1/4" F x 1/2" M)
- 2x compression fittings nut/ring (15 mm)

* from firmware versie 1.1.1

Type	D (")	A (mm)	B (mm)	C (mm)		Order Code
Flexcon PA AutoFill	G 1/2" - 15 mm (2x)	263	136	57	1	23761



Vi tillhandahåller produkter för rör- och värmeinstallationer i över 70 länder. Distribueringen hanteras av dotterbolag och grossister som känner till den lokala marknaden och därför alltid kan ge dig professionella råd.



Flexcon PA (AutoFill) Pressurisation assistant



- Prevents negative pressure-related issues.
- Automatically tops up central heating system (AutoFill).
- Direct reporting of pressurisation.
- Warning of preventive maintenance for the expansion vessel.
- Optimum comfort for the customer.
- Adjustable leak detection (AutoFill).

Related products



T-Plus

For the quick and easy creation of branches in existing systems. With T-Plus the system does not need to be depressurised.

- Order Code 90615 - 90680 (for steel pipe)
- Order Code 90514 - 90542 (for thinwalled steel and copper pipe)



Prescor BFP-EA Back flow protector

Type EA return flow protector suitable for liquid class 2 systems.

- Order Code 27800



Prescor BFP-CA Back flow protector

Type CA return flow protection unit suitable for liquid class 3 systems.

- Order Code 27420



Sverige

Kungsgatan 14
541 31 Skövde

T +46 (0)50 042 89 95
E se.info@aalberts-hfc.com

file_Flexcon-PA_swe_2023-04





Providing comfort efficiently



Flamco PA ger villaägare möjligheten att själva övervaka sitt värmesystem via smartphone. På så sätt kan man tidigt upptäcka om värmesystemet tappat tryck på grund av felaktiga komponenter eller läckage. The Flamco Flexcon PA består av en smart sensor som tillsammans med en app meddelar kunden när systemet är i behov av underhåll.

Advantages

- records and sends out an alert when there are problems with the pressurisation.
- assists in topping up of the central heating system so it is always at optimum operational pressure.
- advises on the expected lifespan of the expansion vessel (initial pressure) with having to disconnect it.
- is able to monitor scheduled maintenance intervals for virtually any component in the system.
- comes with an app that shows complete system status, analyses the pressure readings and provides corresponding maintenance advice.
- can be supplemented with an AutoFill unit that fully automates the topping up of central heating systems as well as providing leak detection.

Flexcon PA

The Flexcon PA is connected to an app on a smartphone or tablet. Conveniently, both you and your customers can have access to its display. You can provide remote assistance for your customers without having to travel to their locations just to refill the system with water. While carrying out routine maintenance, you have access to a special service menu with detailed information allowing you to assess the system's condition. If any parts need replacing, this is shown immediately during the service.

“By using the Flexcon PA, the problems with the system have been resolved!”

I was looking for a solution for a system which was giving us water loss problems. They were causing malfunctions and we had to replace critical components, all of which meant incurring significant costs. A person who works for Wasco Apeldoorn recommended Flamco's Flexcon PA to me. I was mainly intrigued by the Flexcon PA's checking and moni-

ring capabilities that allow optimisation of the system. By using the Flexcon PA, the problems with the system have been resolved and further expenses have been spared!

Matthijs Stegeman - Matthijs Klimaattechniek (Climate Technology) Vaassen (NL)

Flexcon PA Comfort and reliability

Många värmesystemhaverier kan kopplas till för låga vattenvolymer i värmesystemet. Konsekvenserna för villaägare kan bli akuta behov av service. Flexcon PA ger villaägare en

möjlighet att i ett tidigt stadium upptäcka fel i värmesystemet och i god tid påkalla servicepersonal.



The optional Flexcon PA App is handy when initially filling the central heating system. The app provides insight into the central heating system's pressure history.



The Flexcon PA AutoFill monitors the pressure in the central heating system. With a permanent connection to the water pipe, the system is automatically topped up to the required pressure level whenever it drops.



“We expect the Flexcon PA AutoFill saves us a great deal of unscheduled top-up call-outs!”

I work for a technical service in a care home and nursing home organisation with several locations. One of our older systems needs to be topped up quite regularly, including on Sundays and national holidays. To eliminate the need for us to be called out to deal with this kind of job, we decided to fit a Flexcon PA AutoFill. What's more, the log function

gives us a real picture of how often the system is topped up. We expect the Flexcon PA AutoFill to save us a great deal of unscheduled top-up call-outs!

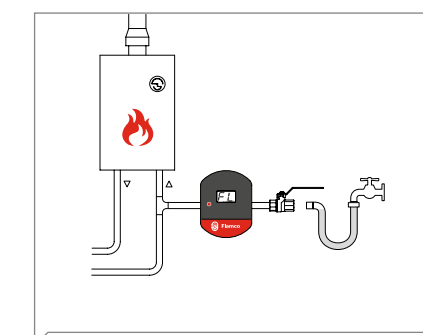
Erik Bouwhuis – Tangenborgh Care Group (NL)

Den personliga assistenten för värmesystemet

Som serviceföretag är ni inblandade i köpet och installationen av Flexcon PA, avläsningen av appen och, naturligtvis också, underhållet. Under installationen ställer ni in Flexcon PA genom att registrera det lägsta

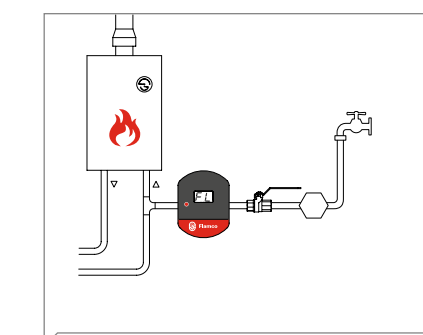
systemtrycket. Om något blir fel med systemtrycket på grund av exempelvis tryckfall i expansionskärlet visar Flexcon PA ett meddelande.

Installationen kan göras på tre sätt:



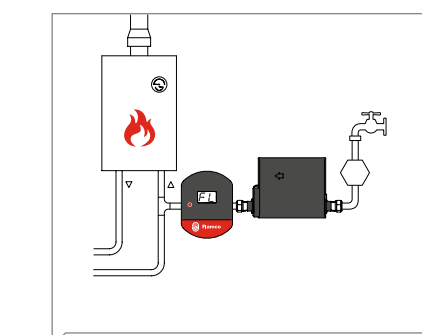
Flexcon PA med app.

Installatören ansluter enheten till värmeenheten. Vid behov fyller kunden på systemet genom att ansluta en slang till centralvärmesystemet.



Flexcon PA med app och permanent anslutning till vattenledning.

Installatören installerar enheten tillsammans med en extra vattenslang, en kulventil och ett återsugningsskydd. För att fylla på systemet behöver kunden bara öppna ventilen.



Flexcon PA AutoFill med app.

Installatören installerar en helautomatisk enhet. Påfyllning sker automatiskt. AutoFill får en signal när Flexcon PA anser att systemet behöver fyllas på. Kunden behöver inte göra något.

List of functions

Function	Flexcon PA 23760	Flexcon PA AutoFill 23761
Filling/topping up assistance	✓	✓
Automatic filling	✗	✓
Expansion vessel check	✓	✓
Safety valve check	✓	✓
Leakage detection	✗	✓
Integrated flow sensor	✗	✓
Permanent water connection	✗	✓
Return flow preventer included	✗	✗
Plug & Play	✓	✓
Works with or without App	✓	✓
App	✓	✓
Real time pressure	✓	✓
Event log	✓	✓
Export data (via E-mail etc.)	✓	✓
Filling via App	✗	✓