

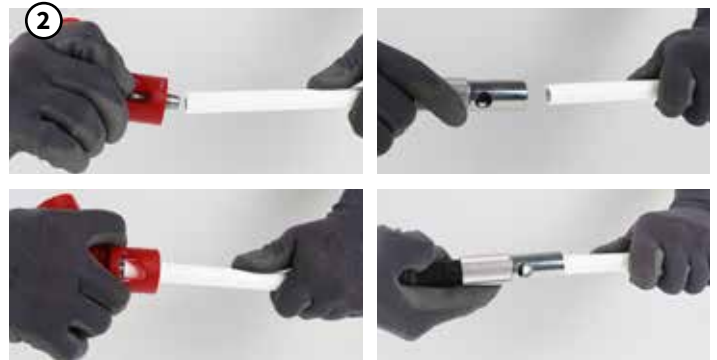
## INSTALLATION TIPS MULTISKIN PUSH

### PIPE PREPARATION

It is important to prepare the pipe properly.



1. Clean and orthogonal cut



2. Calibration with a COMAP tool



To facilitate the pipe calibration step it is possible to adapt calibration bits on a screwdriver. Do not exceed a speed of 500 rounds per minute (speed 1 of the screwdriver).

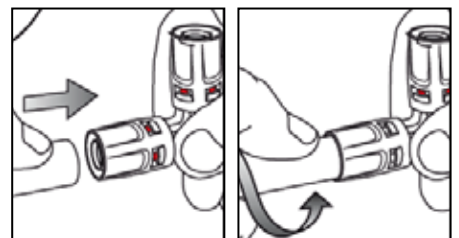


The connection between the pipe and the fitting being tool-free, **it is essential to calibrate the pipe** (chamfers on the inside and outside the tube).

### CONNECTION

Insert the pipe into the fitting while turning it slightly and pushing it in lengthwise. The pipe must be inserted as far as it will go. A abrupt insertion of the pipe into the push-in fitting may damage the Oring and is therefore prohibited.

Make sure that the pipe is inserted correctly using the viewing window (Visu-Control®) insertion.



## ■ VISU-CONTROL®



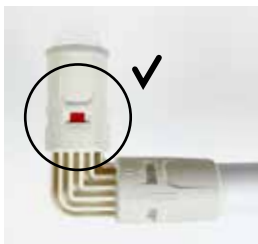
When inserting the pipe into the fitting, the red visucontrol disappears, leaving the place for the white pipe.

The disappearance of the red visucontrol is a testament to the good insertion of the tube and confirms that the connection has been correctly performed (a 'click' also informs about the correct insertion of the pipe).



If the red visucontrol is still visible after insertion, this means that the connection has been badly made (pipe not sufficiently inserted, poor pipe preparation...).

**Reminder:** The MultiSkin Push fitting cannot be removed. Once you start inserting the pipe into the fitting, you mustn't remove it.



**NOTE:** In some very rare cases the visucontrol may not be visible (the visucontrol has tipped into the fitting during transport). This will not affect the professional and quality of the connection. However, it is possible to ask COMAP to make an exchange.

## ■ PROTECTION CAP



The protection cap protects the fitting from impurities during transport and handling.

**We recommend that you only remove the protection cap at the last moment to protect the fitting as much as possible.**

It can happen that a fitting has a missing or even damaged protection cap. This does not affect the proper functioning of the fitting.

**NOTE :** The protection caps are made of recyclable plastic and should be placed in the recycle bin.