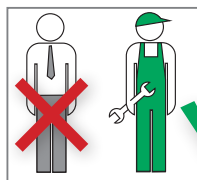


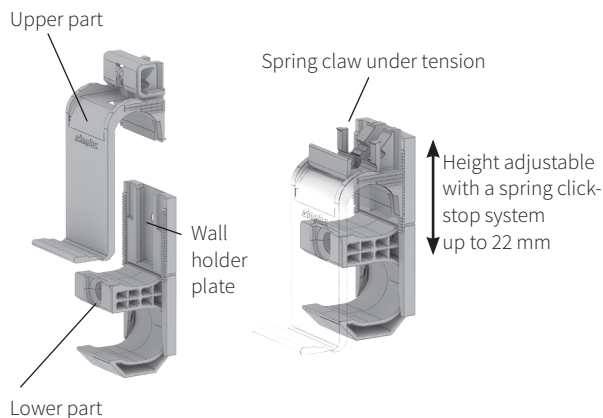
KOMFORT PLUS Baseboard System Mounting Bracket



These instructions are intended for work on heating systems which must only be undertaken by qualified professional personnel and in accordance with the respective applicable regulations, guidelines and rules of engineering.



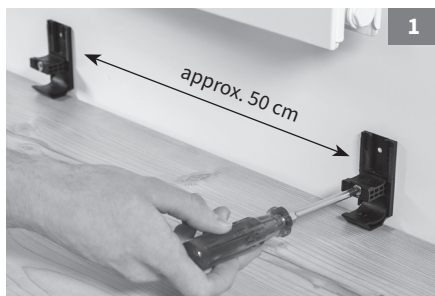
KOMFORT PLUS Mounting Bracket



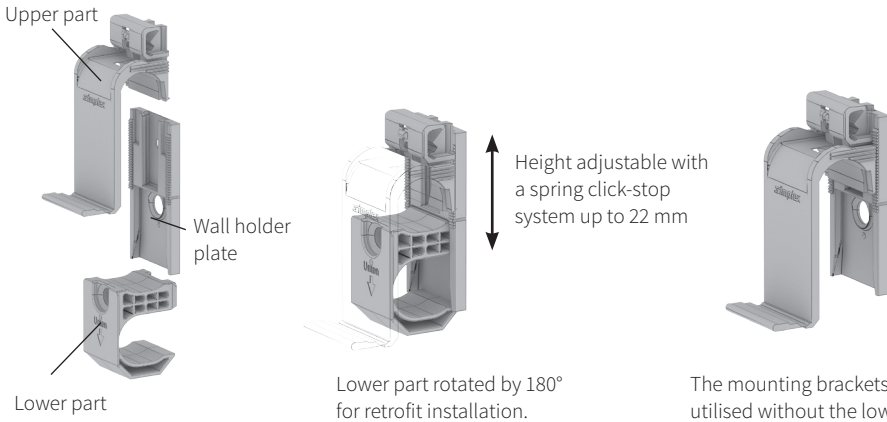
- Level off rough plaster unevenness
- The mounting brackets are suitable for assembly on base boards even when the walls and floor are uneven. **Always ensure** that the on-site circumstances comply with the building tolerances for the structural guidelines according to DIN 18201, DIN 18202 and DIN 18203.
- Position the brackets with intervals of approx. 50 cm on the finished floor surface and secure them on the wall. **1**
- Retain an installation distance of at least 15 cm from the connection valve for the heating radiator connections!
- Install additional fixings on both sides near mouldings with a spacing of approx. 10 cm.
- Secure with \varnothing 6 mm screws or \varnothing 8 mm nail anchors.
- For an optimum connection between the baseboard and the floor surface, always ensure that the mounting brackets are flush with the finished floor surface when they are installed.
- The KOMFORT PLUS mounting brackets provide the possibility for implementing height compensation of up to 22 mm after the installation works!
- Install the pipework (external pipe diameter up to 22 mm) **2**
- Attach upper part and tighten spring claw **3**
- Insert baseboard into mounting bracket **4**
- Swivel the baseboard upwards until it clicks in **5**

Note: The KOMFORT PLUS mounting bracket is omitted in the corner. This provides a free area for laying low voltage cables e.g. telephone or EDP installations.

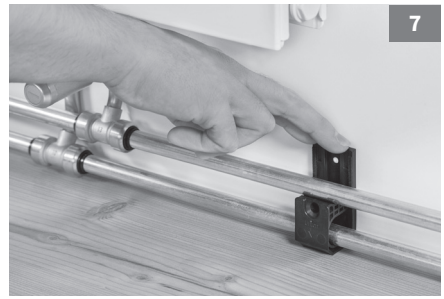
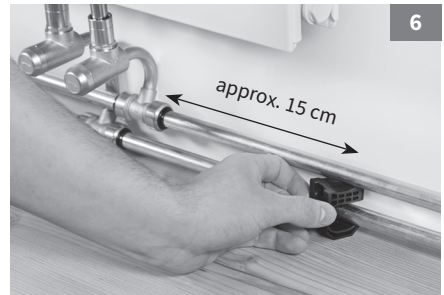
Always comply with the respective installation dimensions and assembly instructions when installing the connection valves.



KOMFORT PLUS Mounting Bracket for Retrofit Installation



- Level off rough plaster unevenness
- The mounting brackets are suitable for assembly on baseboards even when the walls and floor are uneven. **Always ensure** that the on-site circumstances comply with the building tolerances for the structural guidelines according to DIN 18201, DIN 18202 and DIN 18203.
- Position the brackets at intervals of maximum 50 cm above the existing pipework installations on the finished floor.
- Retain an installation distance of at least 15 cm from the connection valve for the heating radiator connections!
- Install additional fixings on both sides near mouldings with a spacing of approx. 10 cm.
- Attach the lower part of the mounting bracket rotated by 180°.



- Assemble the baseboard **4 5**
- The KOMFORT PLUS mounting brackets provide the possibility for implementing height compensation of up to 22 mm after the installation works!
- For an optimum connection between the baseboard and the floor surface, always ensure that the mounting brackets are flush with the finished floor surface when they are installed.

Note: The KOMFORT PLUS mounting bracket is omitted in the corner. This provides a free area for laying low voltage cables e.g. telephone or EDP installations.

Always comply with the respective installation dimensions and assembly instructions when installing the connection valves.

The figures are only intended as an illustration and can deviate from the respective product.
Errors and technical changes reserved.

06/2017