



**comap**

# Siphon

safety valves group



that's excellence.

## technical characteristics

- G.1" threaded entry
- Ø25mm outlet with conical joint or Ø32mm outlet to glue
- 360° rotatable
- Adjustment range of 15mm at the evacuation

## description

- Siphon for safety group for domestic water heating device
- Ensures the evacuation of water that flows when the safety valve is triggered
- Avoids the rise of bad odors.

## standards

Certifié NF 079

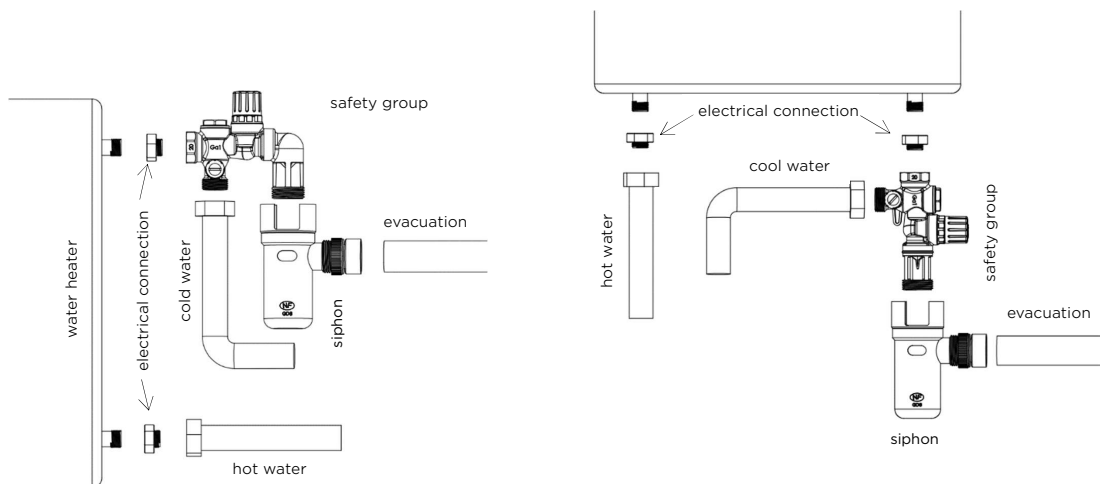
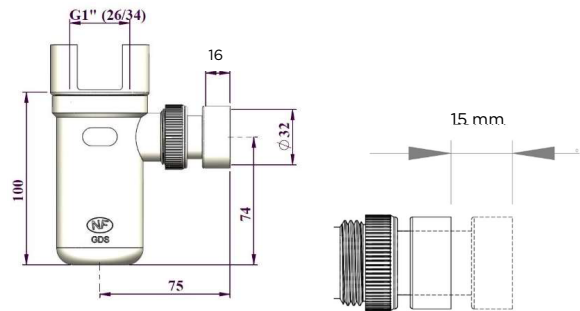


## quality - environment

ISO 9001



ISO 14001



## technische eigenschaften

- G.1-Zoll-Gewindeeingang
- Ø25-mm-Auslass mit konischem Gelenk oder Ø32-mm-Auslass zum Kleben
- 360° drehbar
- Verstellbereich von 15mm bei der Evakuierung

## beschreibung

- Siphon für Sicherheitsgruppe für Warmwasserbereiter.
- Gewährleistet die Evakuierung des fließenden Wassers, wenn das Sicherheitsventil ausgelöst wird.
- Verhindert die Entstehung schlechter Gerüche.

## standards

Certifié NF 079

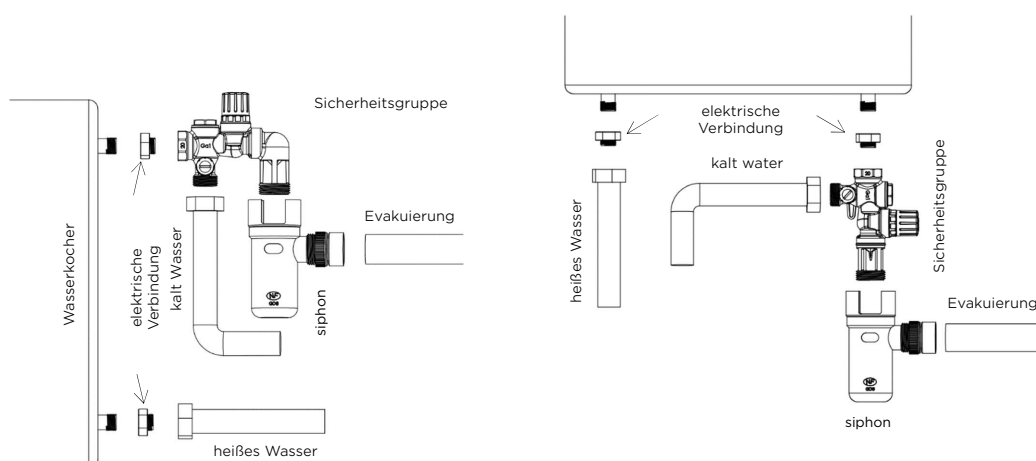
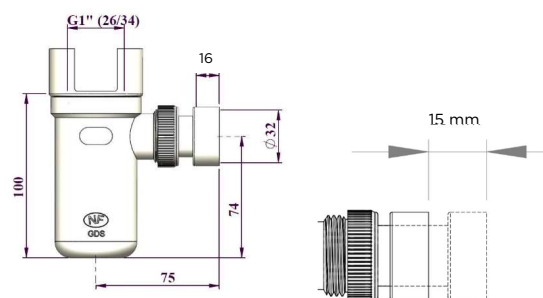


## qualität - umwelt

ISO 9001



ISO 14001



## technische eigenschappen

- G.1"-ingang met schroefdraad
- Ø25mm uitlaat met conische verbinding of Ø32mm uitlaat om te lijmen
- 360° draaibaar
- Instelbereik van 15 mm bij de evacuatie

## omschrijving

- Siphon voor veiligheidsgroep voor verwarmingsapparaat voor huishoudelijk water.
- Zorgt voor de afvoer van water dat stroomt wanneer de veiligheidsklep wordt geactiveerd.
- Voorkomt de opkomst van slechte geuren.

## normen

Certiifié NF 079

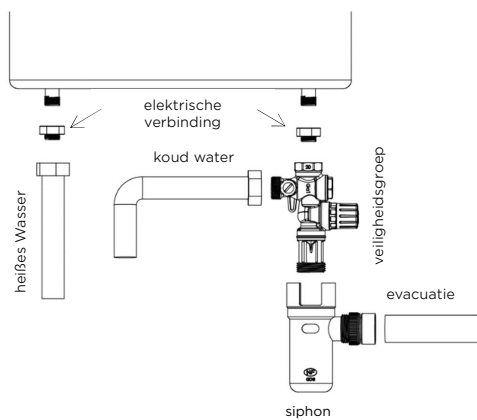
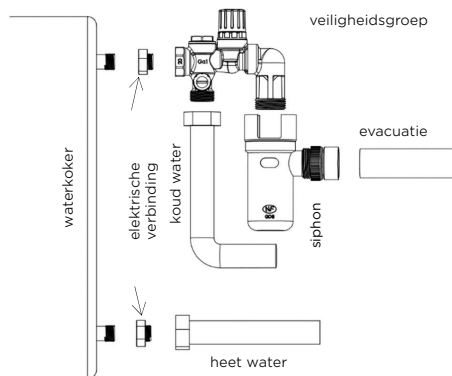
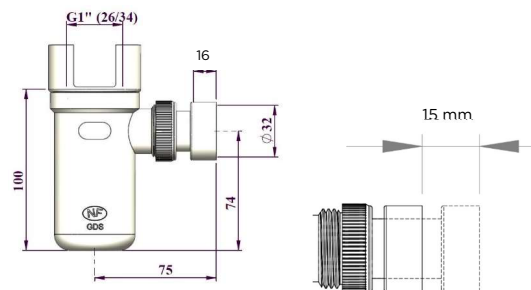


## kwaliteit - milieu

ISO 9001



ISO 14001



## caracteristiques techniques

- Entrée taraudée G.1"
- Sortie Ø25mm avec joint conique ou Sortie Ø32mm à coller
- Orientable à 360°
- Plage de réglage de 15mm à l'évacuation

## description

- Siphon pour groupe de sécurité pour dispositif de chauffage d'eau sanitaire.
- Assure l'évacuation de l'eau qui s'écoule lors du déclenchement de la soupape de sécurité.
- Evite la remontée de mauvaises odeurs

## normes

Certifié NF 079

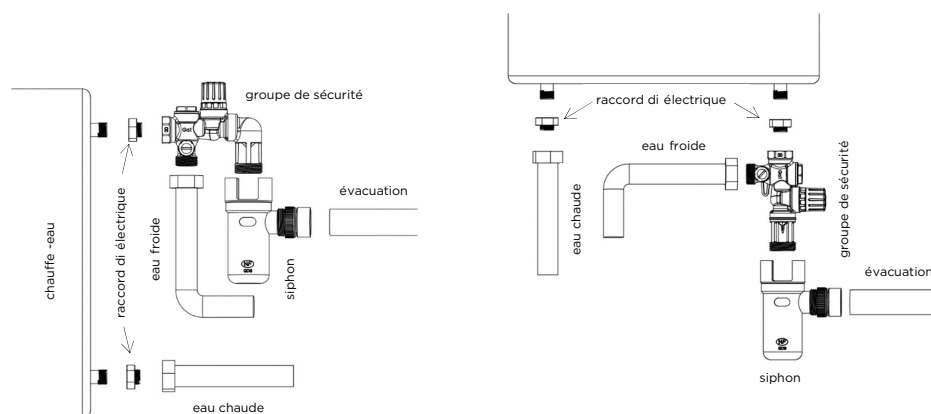
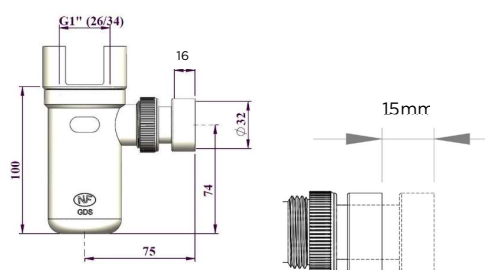


## qualité - environnement

ISO 9001



ISO 14001



COMAP is a European industrial group, expert in the fields of plumbing and HVAC engineering. The group's offer is based on control-regulation, connection and water quality technologies as well as a wide range of sanitary taps. Its products are designed and manufactured in the group's design offices and factories in France, Italy, Spain and China.

COMAP's value-added solutions integrate harmoniously into living spaces, enabling intelligent management of water and energy and contributing to the comfort and well-being of occupants.

With headquarters in France, COMAP operates internationally, with a sales network in more than 20 countries. The group has 1,000 employees and is the "Hydronic Flow Control" entity of the Aalberts group.

**Aalberts hydronic flow control**

+33 (0) 986 000 400 / [fr.info@aalberts-hfc.com](mailto:fr.info@aalberts-hfc.com)

**Aalberts hydronic flow control (Comap)**

Boulevard de la Bataille de Stalingrad 77-79 (Parkview building A 3rd floor) / 69100 Villeurbanne  
France

+33 (0) 986 000 400 / [fr.info@aalberts-hfc.com](mailto:fr.info@aalberts-hfc.com)

[comap.aalberts-hfc.com](http://comap.aalberts-hfc.com)



**comap**