



Flamcomat

Supplementary document

Expansion control, active deaeration, top-up
Druckhaltung, Aktive Entgasung, Nachspeisung
Automatische expansieregeling, actieve ontgassing, bijvulling
Commande de l'expansion, Dégazage actif, appoint



1. Setting up

Aufstellen
Plaatsen
Placer

 **§ 4 + 6**
MC00018/ 03-2016



2. Installation

Installation
Installatie
Installation

 **§ Appendix 1**
MC00018/ 03-2016

Technical Specifications

Technische Daten
Technische specificaties
Caractéristiques techniques

 **§ 5 + 6**
MC00018/ 03-2016

3. Electrical installation

Elektroinstallation
Electrische aansluiten
Installation électrique

 **§ 5 + 6**
MC00018/ 03-2016



4.

Control unit, working principle, commissioning

Steuerung, Funktionsweise, Inbetriebnahmestart

Besturingseenheid, werkingsprincipe, inbedrijfstelling

L'unité de commande, principe de fonctionnement, la mise en service

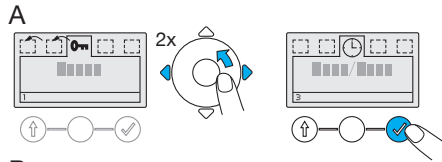


§ 7

MC00018/ 03-2016

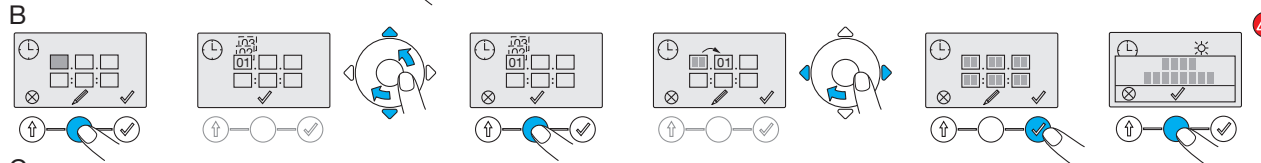
A

Menu
Menü
Menu
Menu



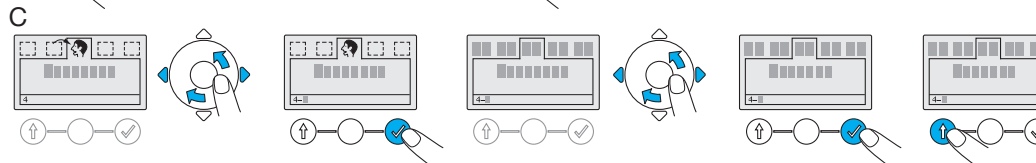
B

Date / time Menu
Datum, Zeit Menü
Datum-/tijd Menu
Data/ Heure Menu



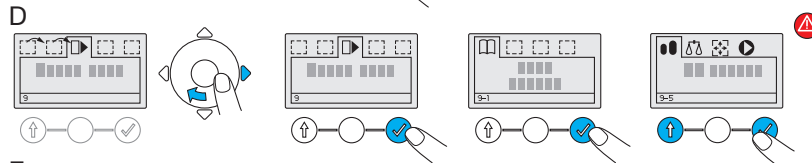
C

Language Menu
Sprache Menü
Taal Menu
Langue Menu



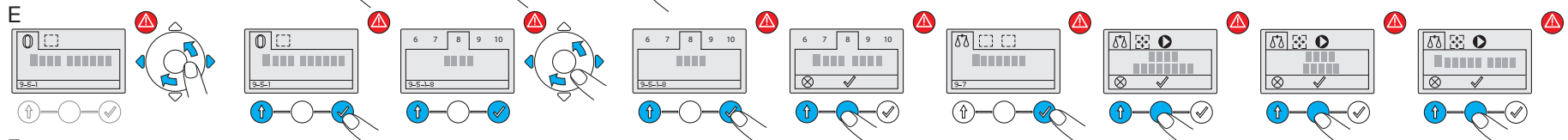
D

Setup
Eingaben
Instellen
Paramétrage



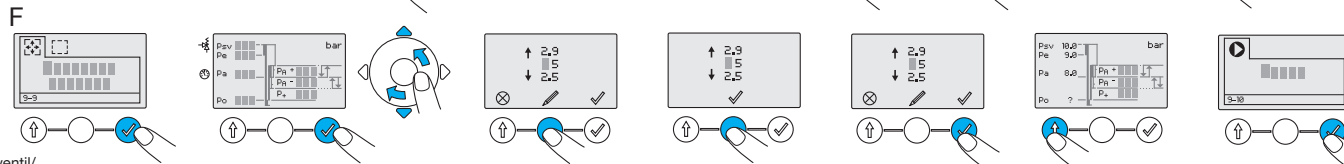
E

Select vessel & Capacity sensor
Behälter wählen und
inhaltsensor abgleichen
Vatkeuze & inhoud sensor
Choix vase & capteur de poids



F

Pressure settings
Druckeinstellungen
Drukinstellingen
Réglages de pression



Psv = Safety valve/ Sicherheitsventil/
Veiligheidsventiel/ Soupape de sécurité
Pa = Working pressure/ Betriebsdruck/
Werkdruk/ Pression de service

5.

Start-up

Füllung

Vulling

Remplissage



§ Appendix 2

MC00018/ 03-2016/ Fig. FM.045.V01.15/

Fig. FM.046.V01.15

Switch-off

Abschaltung

Uitschakelen

Arrêt

