

Logotherm®
**Electronically controlled
Heat Interface Units**



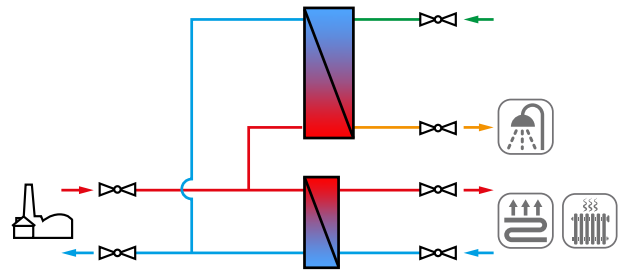
Maximum efficiency and ease of operation

- Highly efficient HIU's ensures low primary operating temperatures
- Fast reacting time of HIU providing instant DHW
- Fully insulated units ensure minimal heat loss
- Extensive range of DHW performances ranges

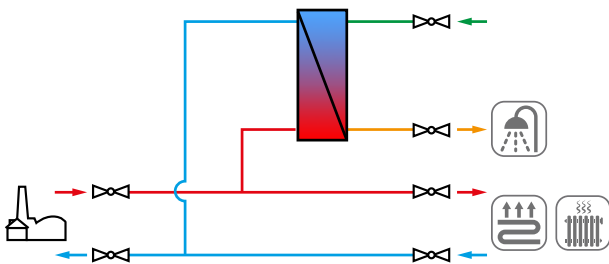
Logotherm® Heat Interface Units - Supply methods

- Heating provided centrally through potentially multiple sources
- Heating & DCW is distributed through risers to the apartments
- There is a HIU unit in every apartment
- The HIU provides heating as well as domestic hot water via a heat exchanger

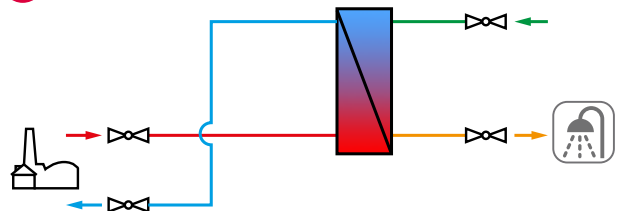
- 1 Indirect DHW & indirect SH (unmixed)
- 2 Indirect DHW & indirect SH (mixed)



- 3 Indirect DHW & direct SH (unmixed or mixed)

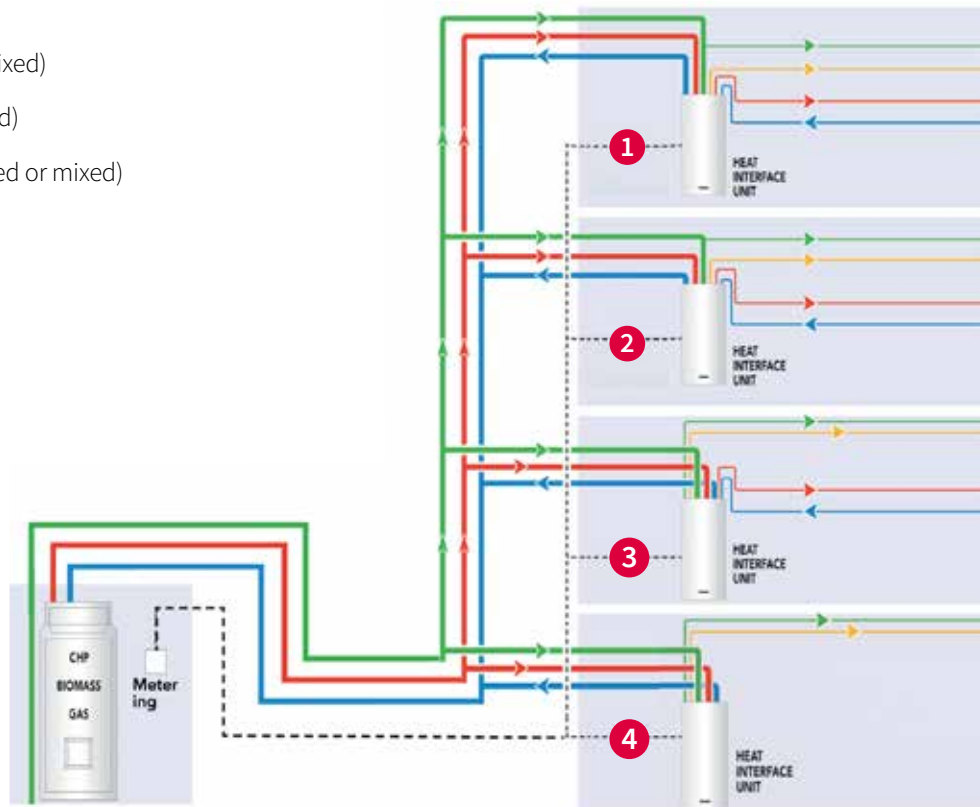


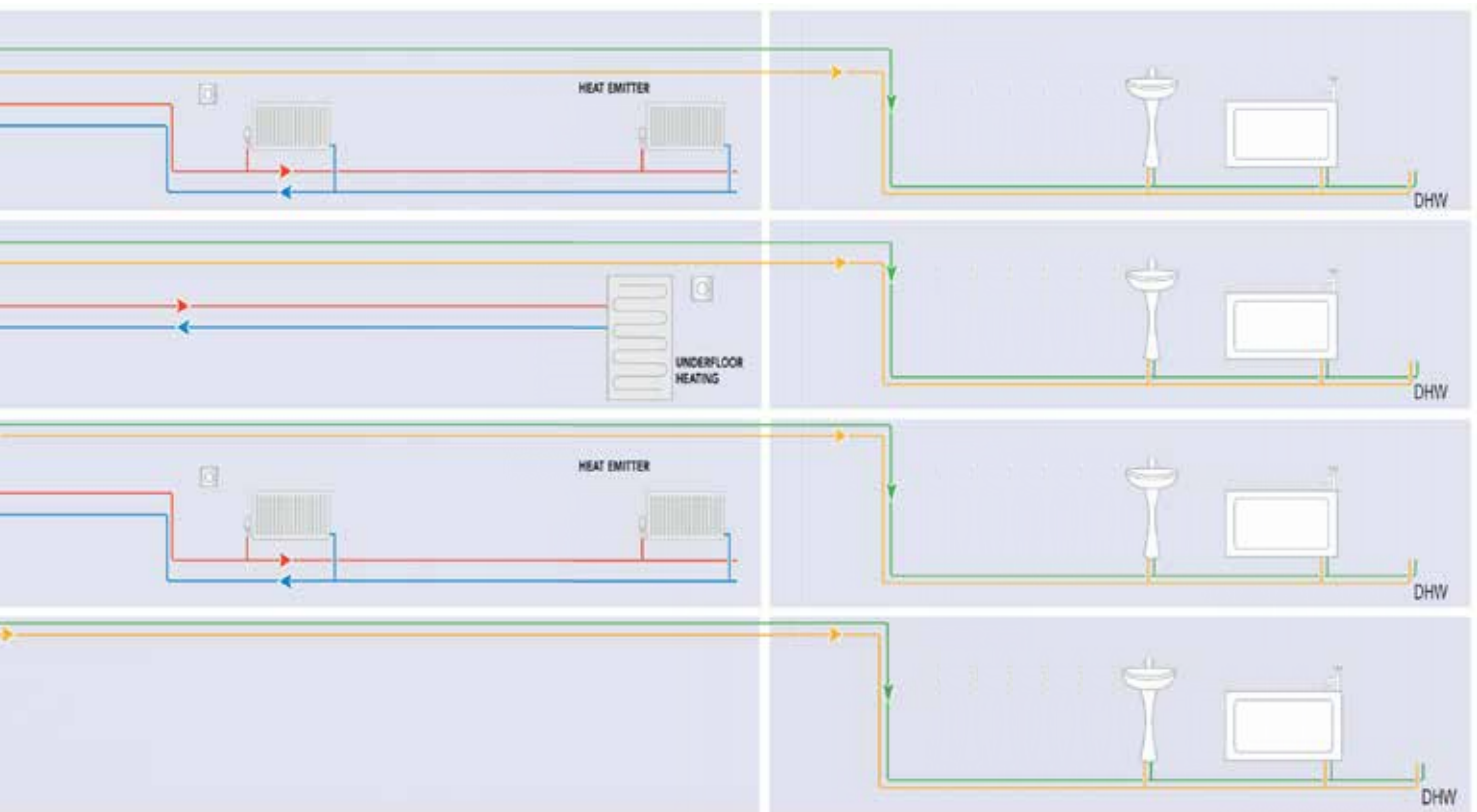
- 4 Indirect DHW



- 1 Indirect DHW & indirect SH (unmixed)
- 2 Indirect DHW & indirect SH (mixed)
- 3 Indirect DHW & direct SH (unmixed or mixed)
- 4 Indirect DHW

- Main water
- Primary flow
- Primary return
- Heating flow
- Heating return
- Potable water
- DHW flow





Portfolio of Electronically controlled Heat Interface Units

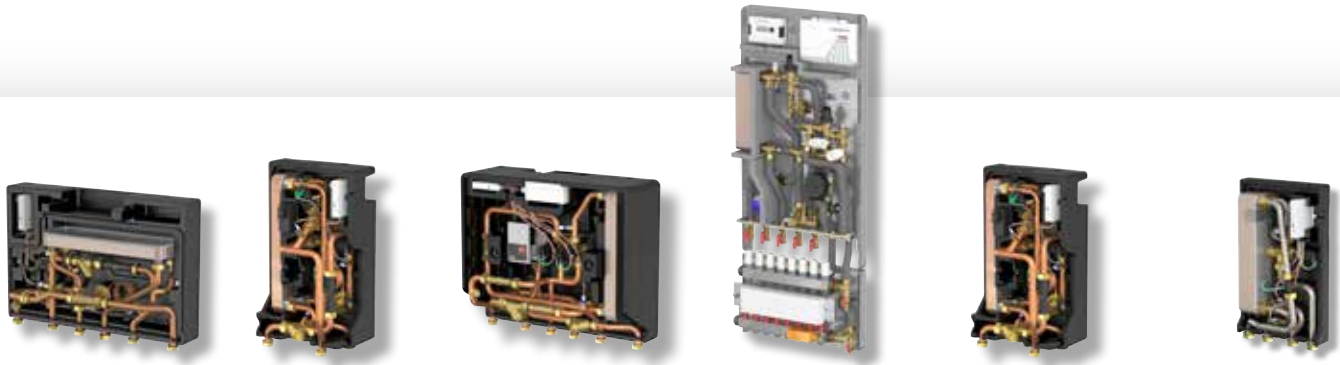
Standard product features

- Keep warm time after draw off
- Legionella prevention program
- Connection of a potential free on/off room thermostat possible
- DHW priority switch
- Adjustable DHW temperature



Supply method	1 2	1 2
Type	LogoEco Split E H-HW	LogoEco Dual E H-HW
(WxDxH) mm	560 x 255 x 486	490 x 280 x 640
Controlling	E	E
SH ¹ supply	H ³ (indirect)	H ³ (indirect)
- Type of SH ¹	UC ⁴ or MC ⁵	UC ⁴ or MC ⁵
DHW ² supply	HW ⁶	HW ⁶
DHW ² circulation	-	optional
Designed for	NLD ⁷ & INT ⁸ excl. UK	INT ⁸
Min. & max primary flow temperature	60°C / 95°C	55°C / 90°C
Min. & max. Δp primary flow	50 / 250	50 / 250
Pressure class primary & DHW (max. working pressure)	PN10 / PN10 (6bar)	PN16 / PN10 (6bar)
Minimal DHW draw off	>1l/min.	>1l/min.
Connections (Bottom ⁴)	¾" nut	¾" nut
Electrical connections V/Hz	230/50	230/50
Spool piece primary side ¾" 110mm + sensor pocket	Flow / return	Flow
Strainer primary side	Flow / return	Flow / return
DP control valve primary side	no	optional
Pipe material	copper	copper
Plate heat exchanger for	HW ³ / SH ¹	HW ³ / SH ¹
Pump secondary circuit	Yes	Yes
Expansion vessel & over pressure relief valve	No	Yes
Return flow inhibitor SH & automatic air venting	No	No
Water hammer arrestor & pre-payment valve	No	Yes
EPP insulation box	Yes	Yes
Adjustable DHW temperature	Yes	Yes
Available with 2nd DCW ² connection	No	No
Available as flush mountable version too	No	No
Possible to combine UFH manifolds directly with the HIU	No	No
Available pre-wiring concept to connect the terminal strip & actuators	No	No
Available with 2 SH ¹ circuits (UC ³ & MC ⁴) in one HIU	No	No
Weather compensating heating control	No	No
Screed heat function	No	No
Optional available first fix rails	Yes	Yes
Optional available ball valve set	No	No

1 SH = space heating / 2 DHW = Domestic Hot Water / 3 H = Heating / 4 UC = unmixed circuit / 5 MC = Mixed circuit / 6 HW = Hot Water



3	3	3	3	4	4
LogoEco E H-HW	LogoEco Compact E H-HW	LogoEco Mix E H-HW	LogoMatic G2	LogoEco Compact E HW	LogoEco Compact E HW Instant
570 x 170 x 407	300 x 250 x 495	560 x 255 x 486	500 x 110 x 760* ⁹	300 x 240 x 495	255 x 125 x 415
E	E	E	E	E	E
H ³ (direct)	H ³ (direct)	H ³ (direct)	H ³ (direct)	-	-
UC ⁴	UC ⁴	MC ⁵	UC ⁴ and / or MC ⁵	-	-
HW ⁶	HW ⁶	HW ⁶	HW ⁶	HW ⁶	HW ⁶
-	-	-	optional	-	-
NLD ⁷ & INT ⁸	INT ⁸	NLD ⁷	INT ⁸	NLD ⁷ & INT ⁸	INT ⁸
60°C / 95°C	60°C / 95°C	60°C / 95°C	52°C / 100°C	60°C / 95°C	60°C / 95°C
40 / 250	40 / 250	50 / 250	50 / 250	40 / 250	40 / 250
PN16 / PN10 (6bar)	PN16 / PN10 (6bar)	PN16 / PN10 (6bar)	PN10 / PN10	PN16 / PN10 (6bar)	PN16 / PN10 (6bar)
>1l/min.	>1l/min.	>1l/min.	>1l/min.	>1l/min.	>1l/min.
¾" nut	¾" nut	¾" nut	¾" thread	¾" nut	¾" nut
230/50	230/50	230/50	230/50	230/50	230/50
Flow	Flow	Flow / return	Return	Flow	No
Flow	Flow	Flow / return	Flow	Flow	No
yes	yes	no	yes	no	no
copper	copper	copper	Stainless st.	copper	Stainless st.
HW ³	HW ³	HW ³	HW ³	HW ³	HW ³
No	No	Yes	Yes ¹⁰	No	No
No	No	No	No	No	No
No	No	Yes	No	No	No
No	No	No	No	No	No
Yes	Yes	Yes	Yes ¹⁰	Yes	Yes
Yes	Yes	Yes	Yes	Yes	Yes
No	No	No	Yes	No	No
No	No	No	Yes	No	No
No	No	No	Yes	No	No
No	No	No	Yes	No	No
No	No	No	Yes	No	No
No	No	No	Yes	No	No
Yes	Yes	Yes	Yes	Yes	Yes
No	No	No	Yes	No	No

7 NLD = Dutch market / 8 INT = International markets / 9 product dimension depending on type of unit / 10 Depend on the size or the product

Technology & series



Logotherm® Heat Interface Units

- Highly modern based on the electronically controlled HIU
- Complete pre-manufactured and internally pre-wired
- High efficient based on the design, type of controlling and the EPP insulation
- Available as surface and some of them as a flush mountable version
- For a indirect DHW preparation
- For a indirect DHW preparation & a indirect or direct heating supply

LogoEco & LogoMatic G2 product series - A high standard



LogoEco Dual
EH-HW



LogoEco Split
EH-HW



LogoEco Compact
EH HW Instant



LogoMatic G2



Also available
Logotherm case
for flush mounting



Various HIU's and different product combinations allowing project related solutions



Eco friendly based on qualitative materials and efficient operation modes



High efficient and cost saving based on optimized operations and energy efficient designs

- The comfort of a keep warm function of the HIU
- High efficient HIU's based on the type of controlling and the fully insulated cases / covers (EPP insulation)
- The possibility to measure consumption via a heat meter
- Insulation allows for radio transmission for communication modules
- Priority switch of the DHW preparation
- Ultra fast DHW regulation, also at fluctuating primary temperatures (e.g. summer & winter mode operation of the primary network)

- Increased reliability due to the avoidance of moving parts in the domestic hot water
- For use in radiators ("UC"), underfloor heating circuits ("MC") and mixed
- Compact unit design allowing for installation in confined spaces
- High network efficiency achieved low return temperatures
- Available in different DHW performance ranges
- LogoMatic G2 only: incl. second cold water connection and optional DHW circulation, direct connection UFH manifolds & as flush mounted version available

Supply methods 1 2

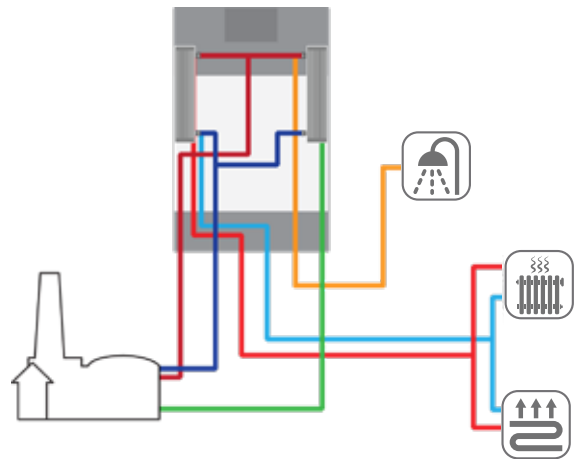
Indirect heating & hot water preparation (instantaneous hot water)

Advantages of application:

- Space saving
- Reduced risk of legionella
- Hydraulic separation between network and dwelling
- Better return temperatures in space heating mode
- Lower overall system cost compared with stored hot water system
- Operation of the primary and secondary network with different pressures and temperatures (especially for high rise buildings an advantage)



E.g: Typical application; used in a dwelling (North Europe design)



LogoEco Split
E H-HW



LogoEco Dual
E H-HW

Your product & application advantages:

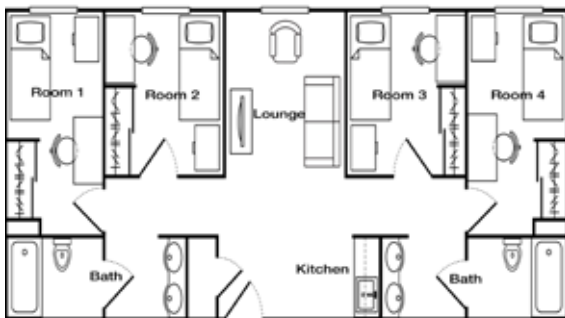
- Different DHW performances are available (up to 80kW depending on type)
- Very compact unit
- Simple to install and to commission
- Bottom entry connections (First Fix Rail available)
- Low return temperatures especially at low flow rates
- Suitable for low district heating temperatures
- Possible installation of heat meters
- For unmixed & mixed heating circuits
- Optional DHW circulation and pre-payment valve
- Selectable "Keep warm" function and pasteurisation cycle (anti-legionella program)

Supply method **3**

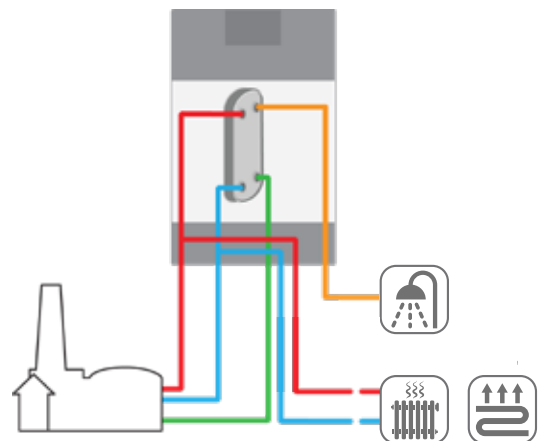
Direct heating & hot water preparation (instantaneous hot water)

Advantages of application:

- Space saving
- Reduced risk of legionella
- Lower overall system cost compared with indirect
- Better return temperatures in space heating mode system and stored hot water



E.g: Typical application; used in a dwelling (central Europe design)



LogoEco
E H-HW



LogoEco Compact
E H-HW



LogoEco Mix
E-HW



LogoMatic G2

Your product & application advantages:

- Different DHW performances are available (up to 80kW depending on type)
- Very compact unit (especially the “Compact” versions)
- Simple to install and to commission
- Bottom entry connections (First Fix Rail available)
- Low return temperatures especially at low flow rates
- Suitable for low district heating temperatures
- Possible installation of heat meters (also water meter at the LogoMatic G2)
- For unmixed & mixed heating circuits (depending on type)
- Selectable “Keep warm” function and pasteurisation cycle (anti-legionella program)
- Available as flush or surface mountable version (LogoMatic G2 only)
- Possible to integrate with underfloor heating manifold (LogoMatic G2 only)
- Available with DHW circulation (LogoMatic G2 only)

Supply method 4

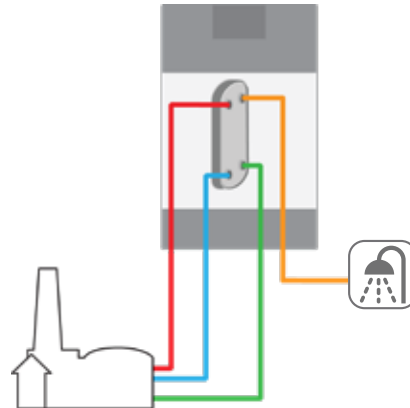
Hot water only (instantaneous hot water)

Advantages of application:

- Ideal where only hot water is required
- Reduced risk of legionella
- Small and compact



E.g.: Typical application; Retrofit with existing electrical heating



*LogoEco Compact
E-HW*



*LogoEco Compact
E-HW Instant*

Your product & application advantages:

- Different DHW performances are available (up to 60kW depending on type)
- Very compact unit (especially the “LogoEco Compact E HW Instant”)
- Selectable / adjustable hot water temperature
- Bottom entry connections (First Fix Rail available)
- Low return temperatures especially at low flow rates
- Suitable for low district heating temperatures
- Selectable “Keep warm” function and pasteurisation cycle (anti-legionella program)



We supply products for heating systems to installation companies in more than 70 countries. We use a network of subsidiaries and wholesalers who are familiar with the local market and can therefore always provide you with expert advice.

The Netherlands

Flamco B.V.
PO Box 502
3750 GM Bunschoten
Amersfoortseweg 9
3751 LJ Bunschoten

T +31 (0)33 299 75 00
E info@flamco.nl

United Kingdom

Flamco Limited
Washway Lane
St Helens, Merseyside
WA10 6PB

T +44 1744 744 744
E info@flamco.co.uk